

# CASE STUDY

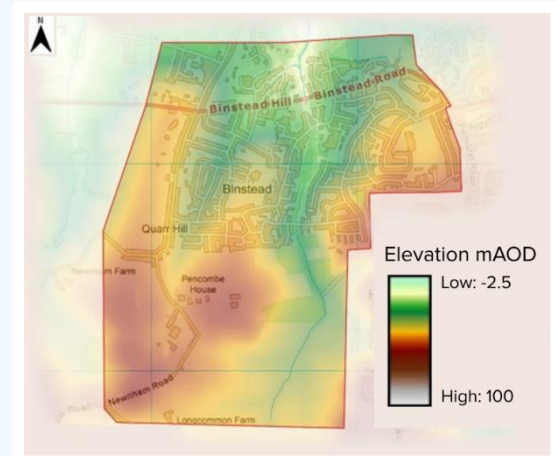


from  
Southern  
Water.

## Encouraging robust flood prevention plans to **reduce flooding in Binstead**

### Background

Binstead is a village on the Isle of Wight, in the southeast of England. Located in the northeast of the island, approximately 2.4km west of Ryde, Binstead is surrounded by woodland and agricultural farms in the south and west, with the coastline to the north.



The area is mostly low lying. This, coupled with the presence of Binstead stream, a small watercourse which runs through the village towards the Solent, and an increase of extreme weather events and impermeable ground, resulted in persistent localised flooding. This caused internal flooding to at least 20 properties which is distressing for residents.

Collaboration was vital for the success of this project. Most surface water issues in the area are related to land drainage and watercourse maintenance, which are the responsibility of the Environment Agency (EA) and the local authority. As such, the [Clean Rivers and Seas Task Force](#) worked in partnership with the Isle of Wight Council to find and implement a long-term solution to the problem, and improve flood strategies going forwards.

### Our approach

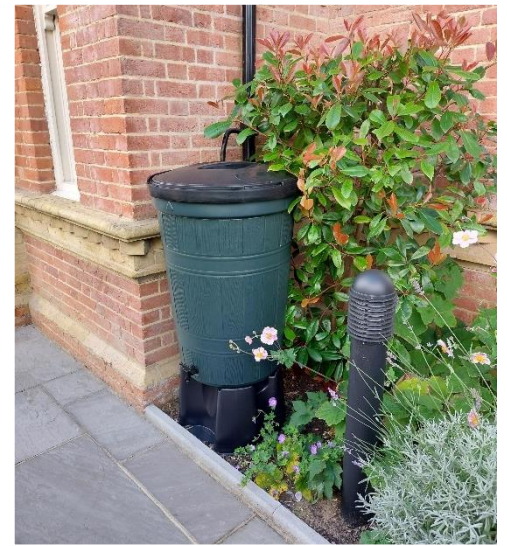
- **Partnership:** The Isle of Wight Council are the Lead Local Flood Authority (LLFA) for the Isle of Wight. This means they must prepare and maintain a strategy for local flood risk management in their areas. We offered our support and knowledge of the drainage in the area to help them improve this strategy and make plans for changes to improve flood management. We're also assisting with any operational improvements needed.
- **Investigation:** A section 19 flood investigation was carried out by the Isle of Wight Council. This is a mandatory report which must be created by the LLFA following a flood. The report serves to discover and detail why the flooding happened and who is responsible for resolving it. As part of the investigation, we engaged with local stakeholders, including residents, community representatives and other Risk Management Authorities.
- **Supporting SuDS:** To support the works being carried out on the council owned infrastructure, we've offered Sustainable Drainage Systems (SuDS) to homes and businesses in the area to help reduce flooding. These SuDS include slow-drain water butts to manage rainwater run-off from roofs, and a driveway depaving scheme to manage run-off from driveways. These interventions will drastically reduce the amount of water that rushes into the sewer system when it rains.

Slow-drain  
water butt



## Outcome

Partnership was key for this project, as the infrastructure that needed improvement is not owned by Southern Water. We worked with Isle of Wight Council, funding contributors, Local Planning Authorities (LPAs), the Environment Agency (EA) and Natural England to ensure the most suitable solutions were planned, and we will stay involved throughout the improvement process to offer our support to the agencies making the necessary changes.



## Costs

The investigation, surveys and analysis of the area as well as the development, planning and modelling of the proposed solutions totalled £100,000. This was jointly funded, 50% by the Environment Agency and the remaining 50% split between Southern Water and the Isle of Wight Council.

## Advantages

- Reduced flooding and surface water build-up in Binstead.
- Increased understanding by local authorities of how water behaves in the area and how to manage it.
- Improved flood management plan and associated actions in place to reduce flooding long-term.

## More information

[The Clean Rivers and Seas Task Force](#)

[Isle of Wight pathfinder project](#)

[Clean Rivers and Seas Plan \(interactive map\)](#)

[November Task Force Update](#)

Binstead  
stream

