

Lower Nailbourne Infiltration Plan

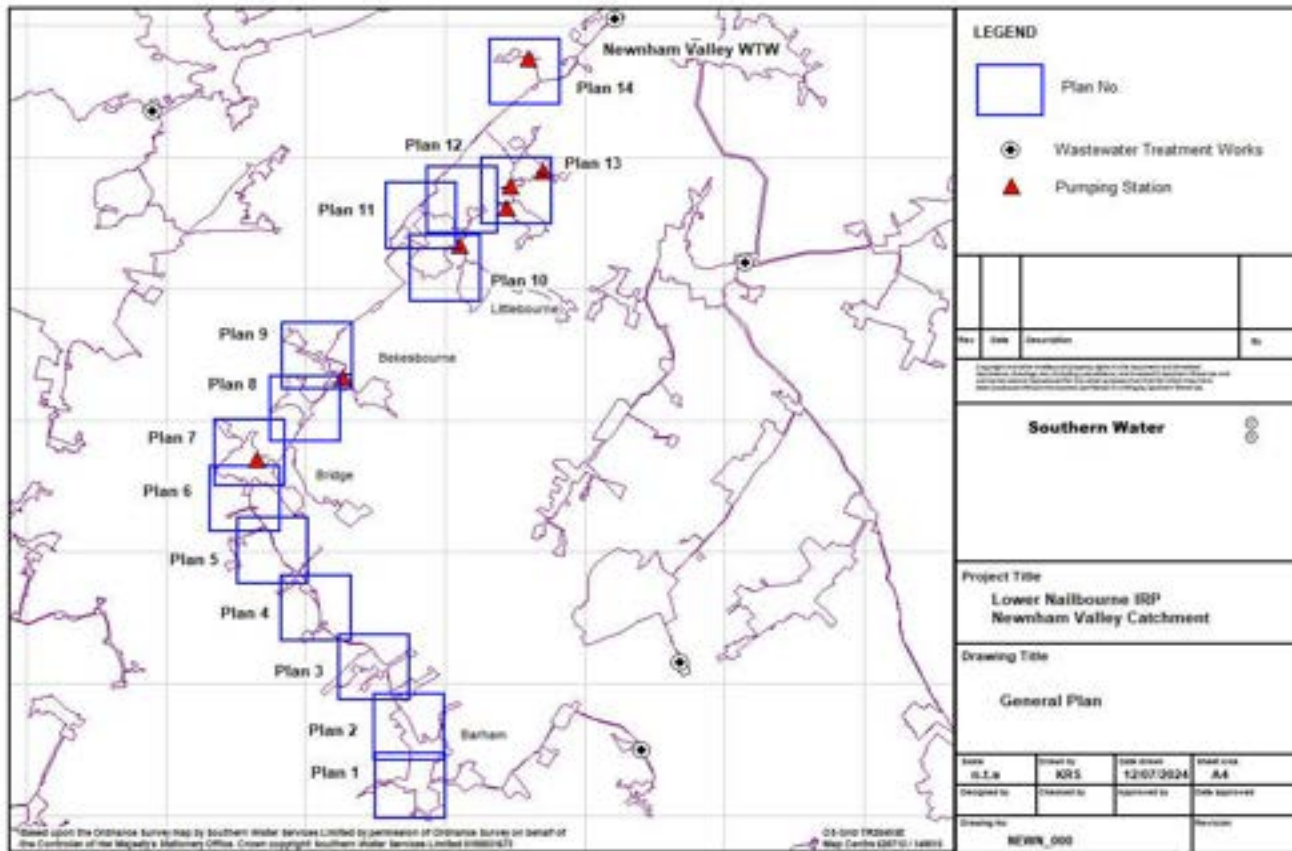
Appendix A – Status of Planned Actions July 2024



from
**Southern
Water** 

The logo graphic for Southern Water, featuring three stylized blue waves of varying lengths, with the longest wave on the right.

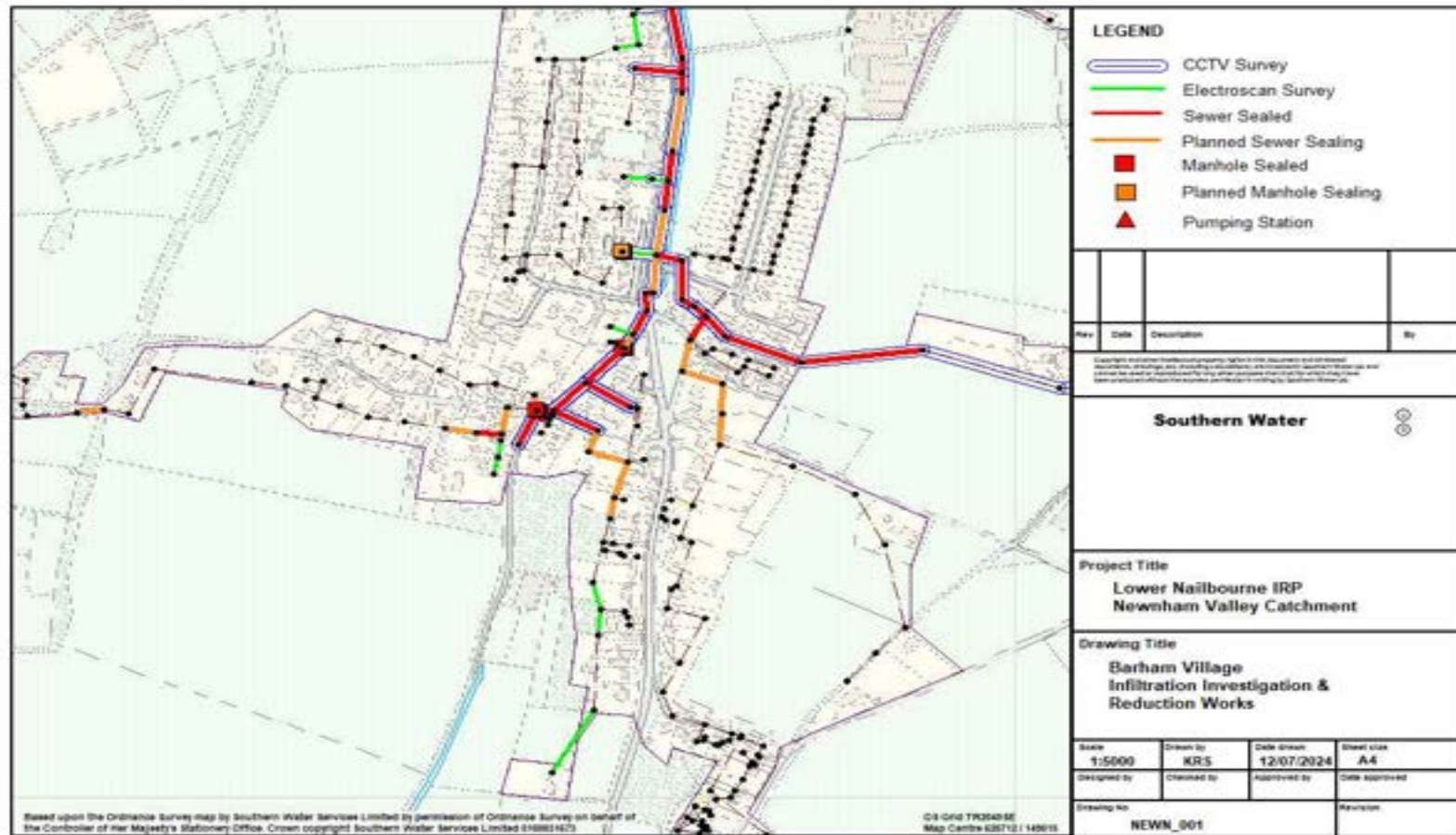
Reference Plan



Action	km
Length Surveyed	85.06
Length with no work required	72.57
Length sealed	9.27
Length to be sealed	3.22
Manholes sealed	6
Manholes to be sealed	1



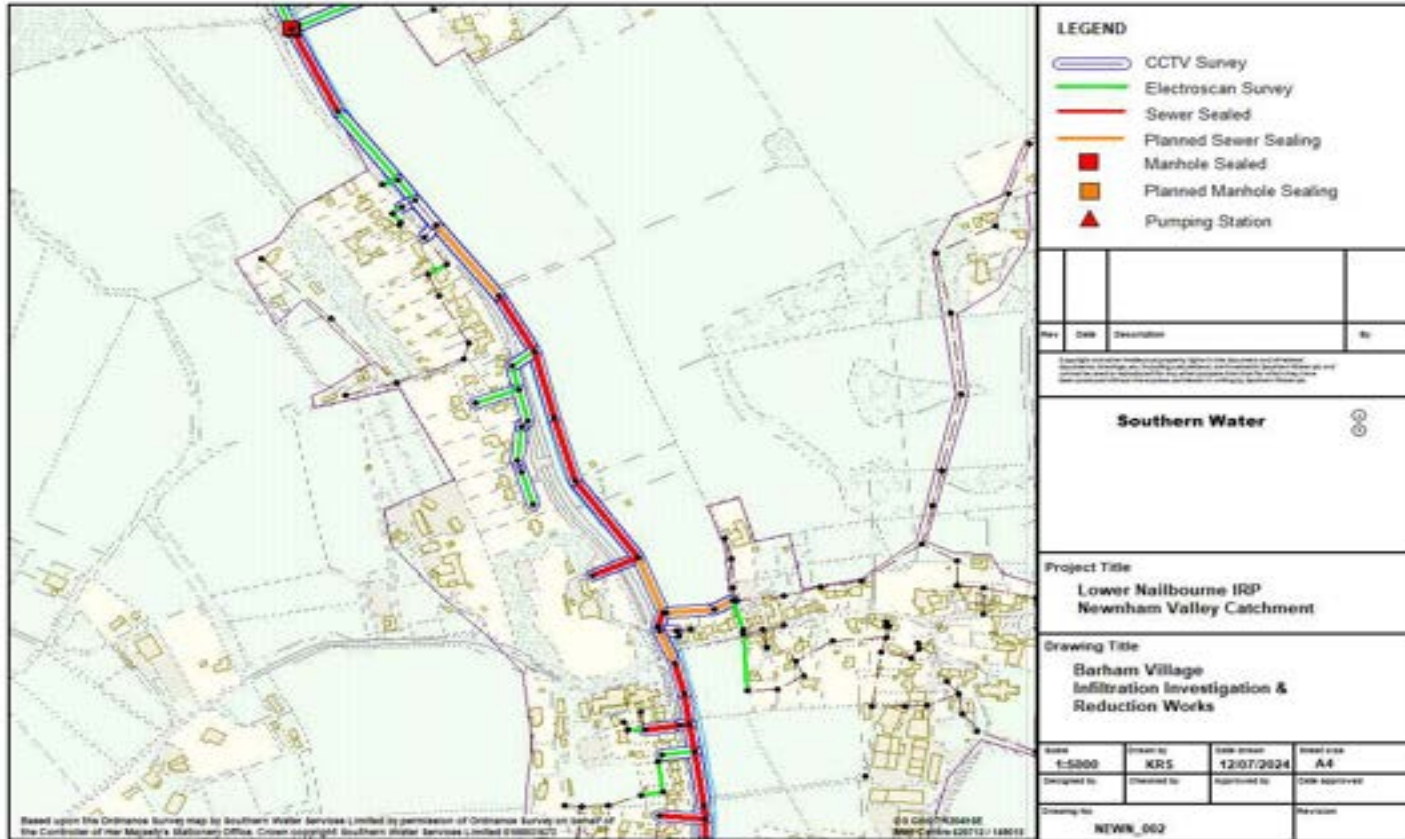
Detailed plan 1



Note – sewers shown as surveyed by CCTV or electroscan with no corresponding sealing work have been determined to not require rehabilitation.



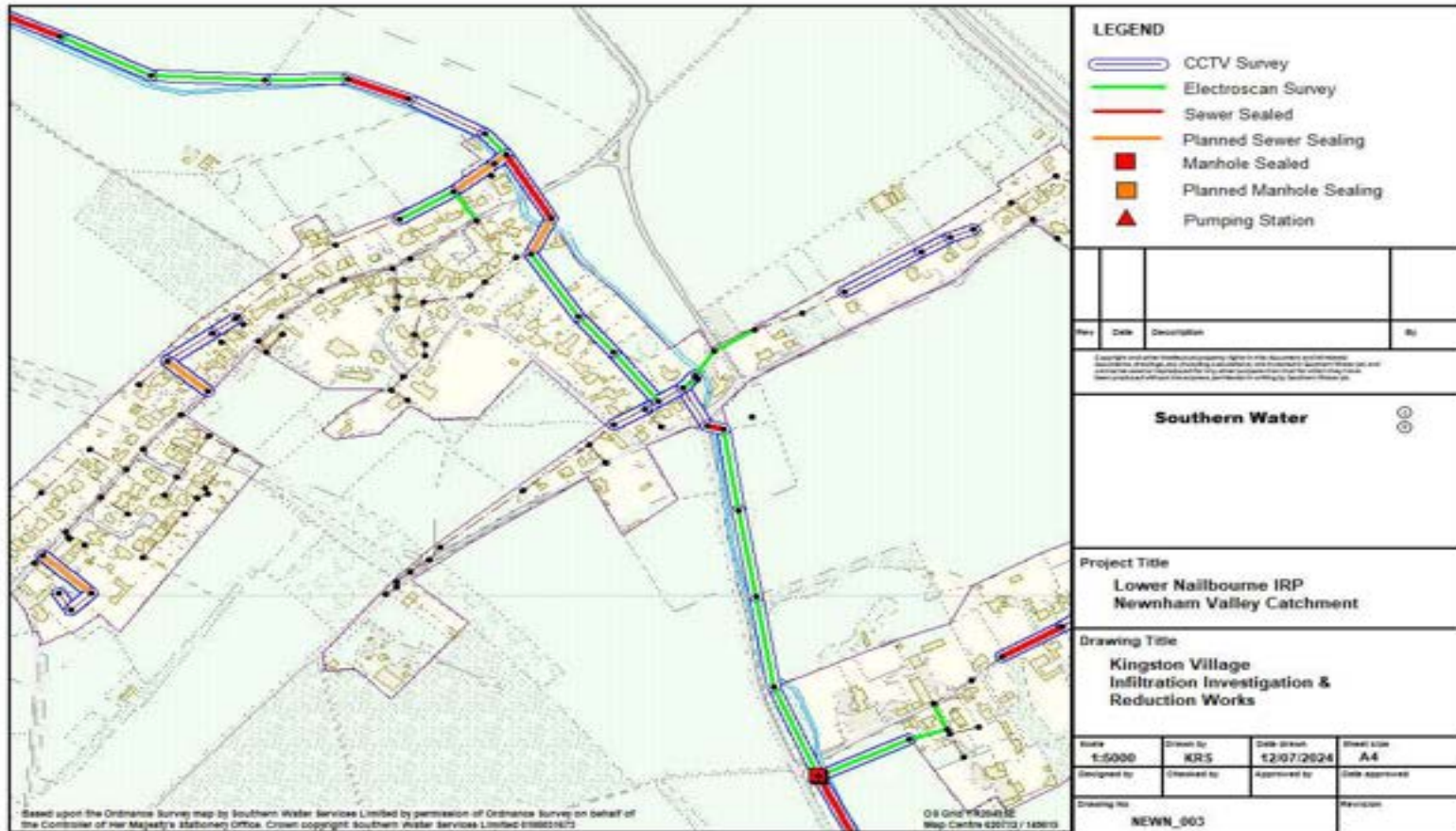
Detailed plan 2



Note – sewers shown as surveyed by CCTV or electroscan with no corresponding sealing work have been determined to not require rehabilitation.



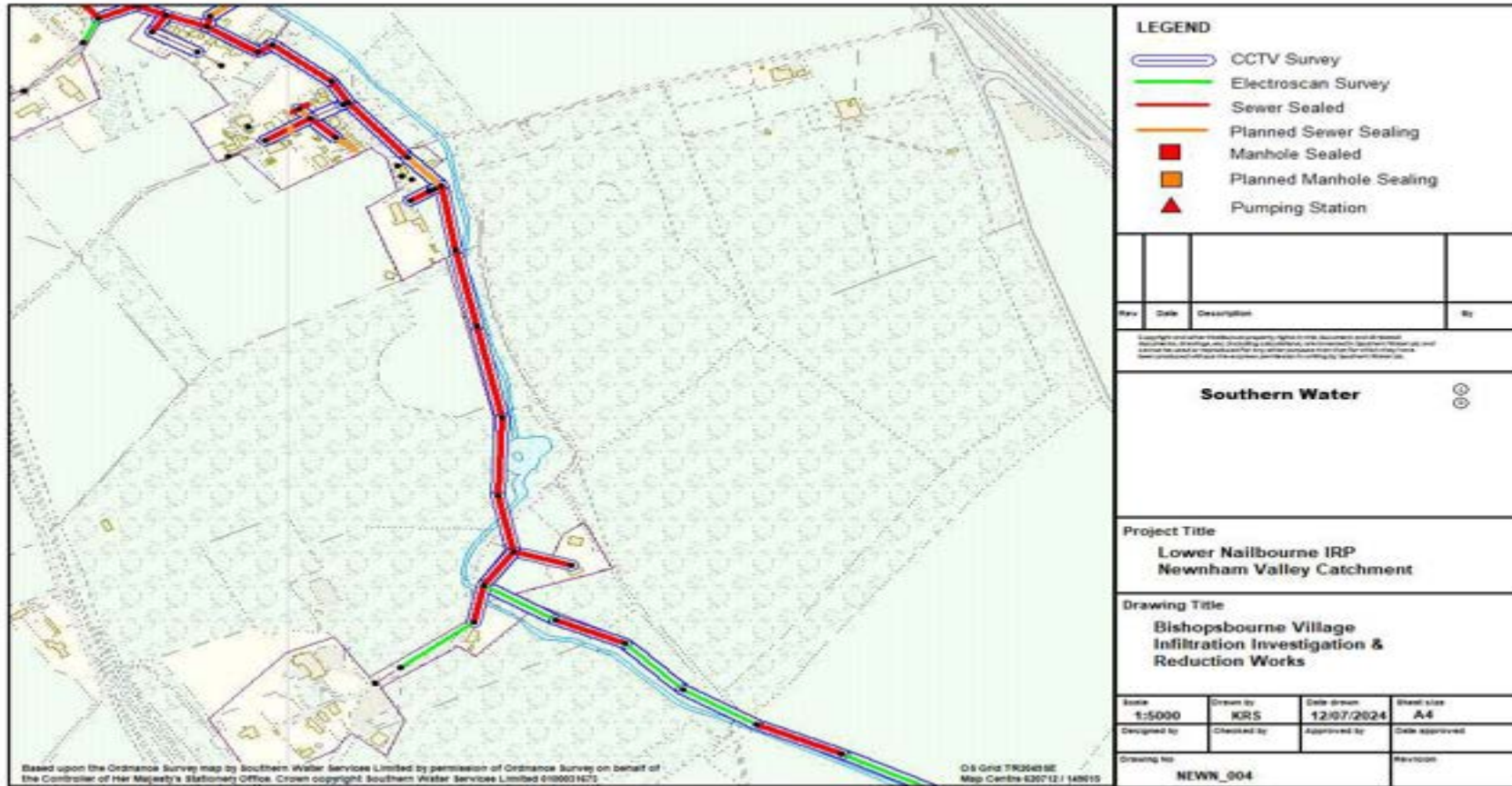
Detailed plan 3



Note – sewers shown as surveyed by CCTV or electroscan with no corresponding sealing work have been determined to not require rehabilitation.



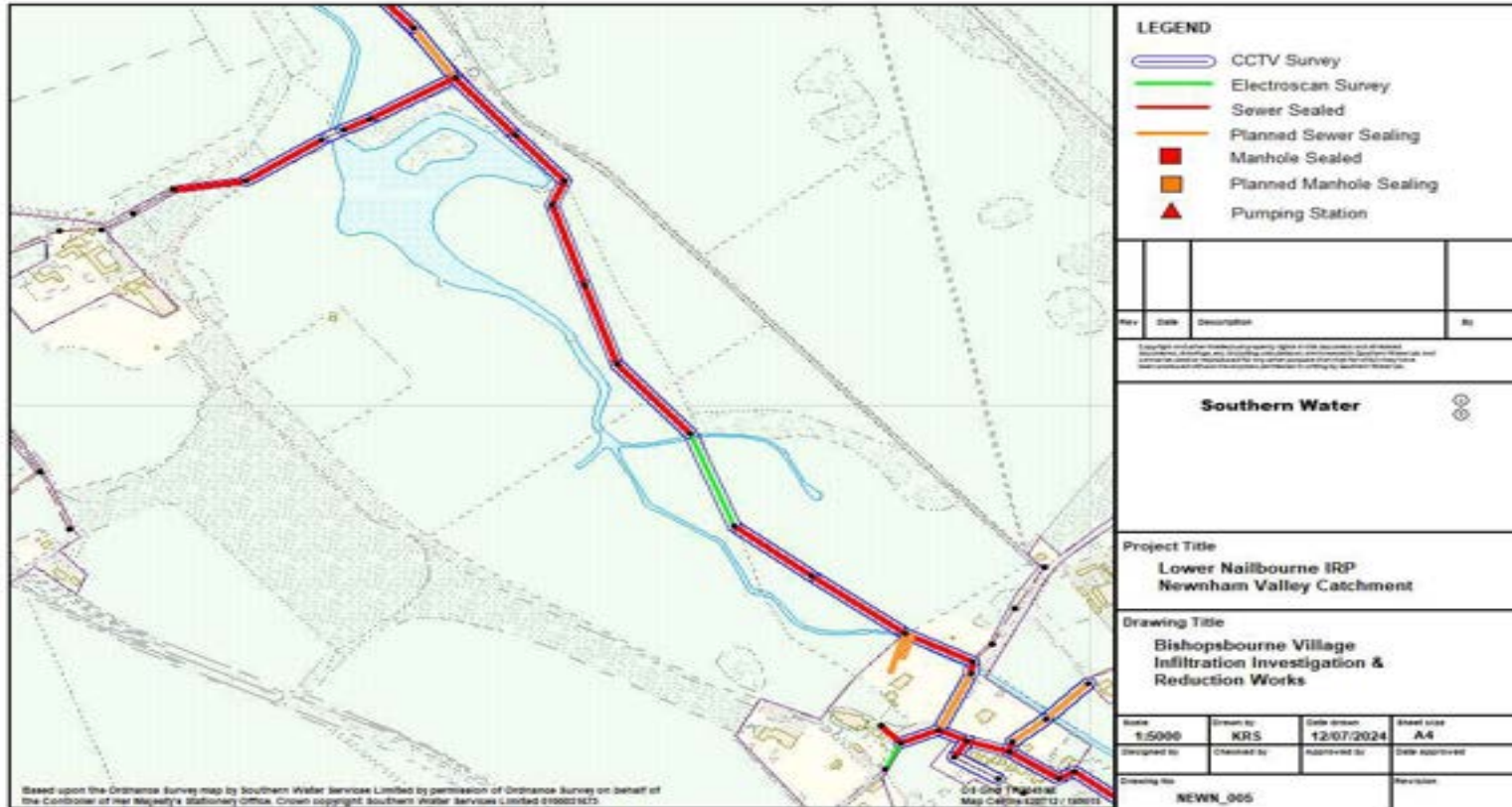
Detailed plan 4



Note – sewers shown as surveyed by CCTV or electroscan with no corresponding sealing work have been determined to not require rehabilitation.



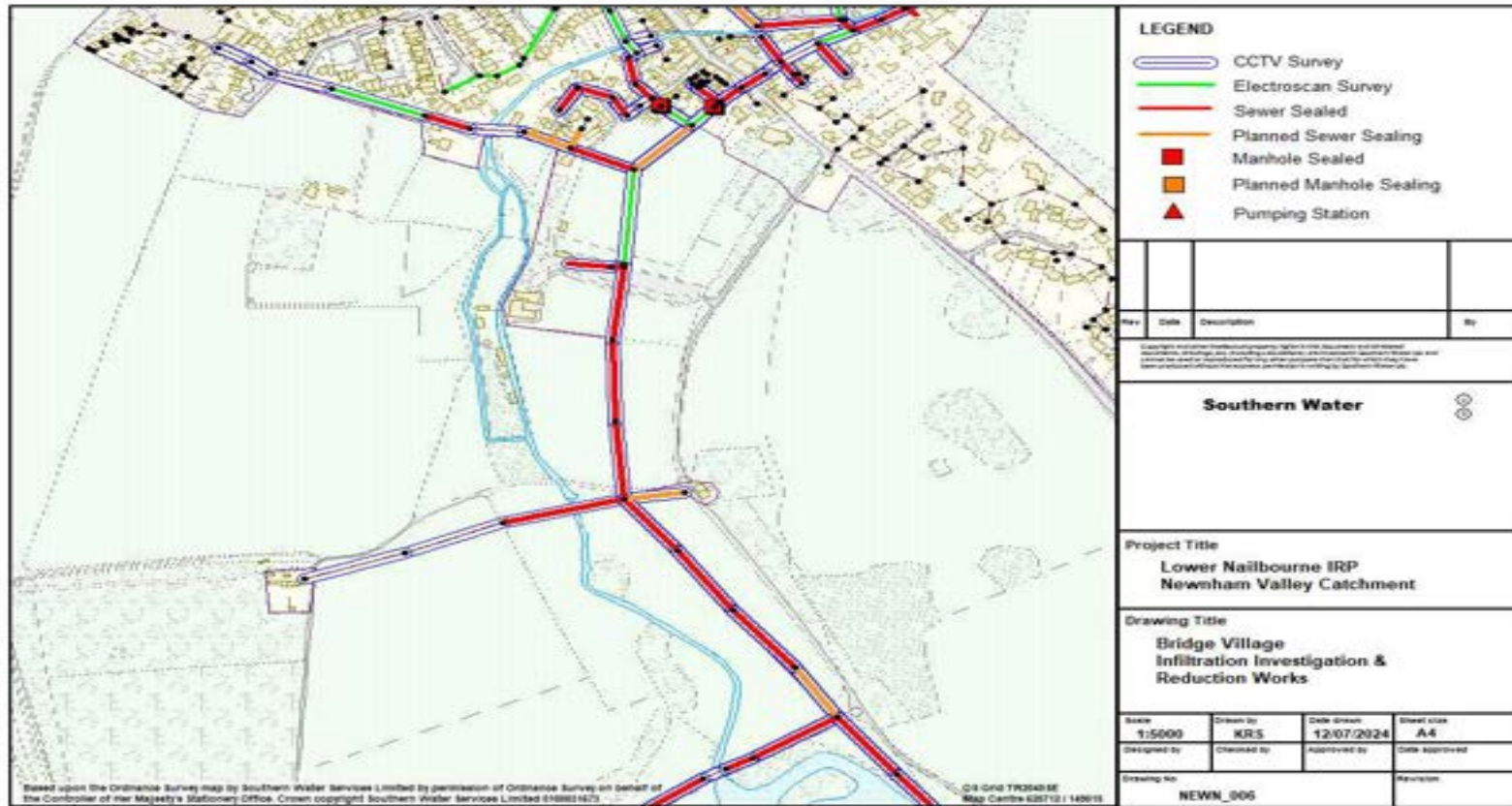
Detailed plan 5



Note – sewers shown as surveyed by CCTV or electroscan with no corresponding sealing work have been determined to not require rehabilitation.



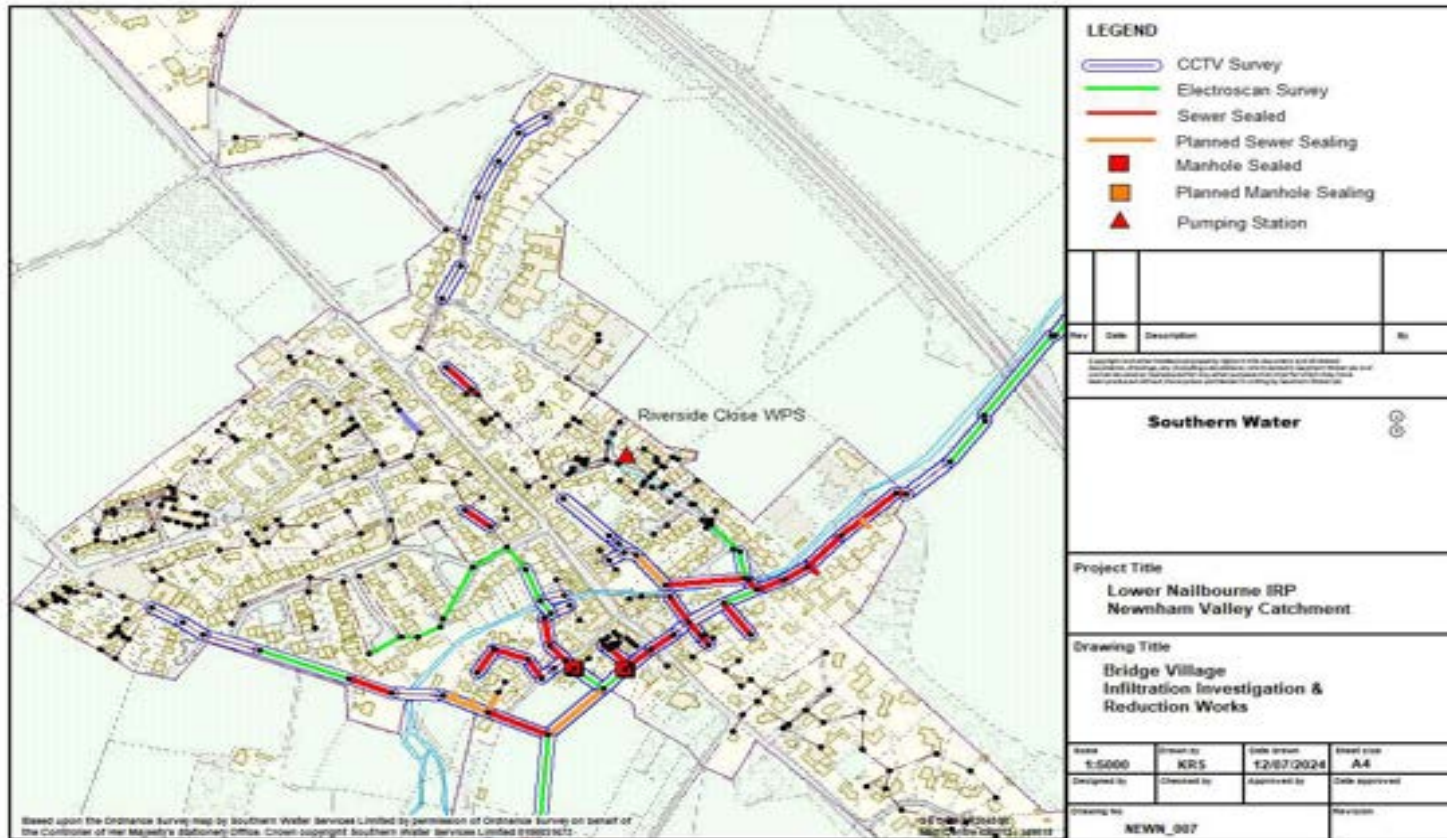
Detailed plan 6



Note – sewers shown as surveyed by CCTV or electroscan with no corresponding sealing work have been determined to not require rehabilitation.



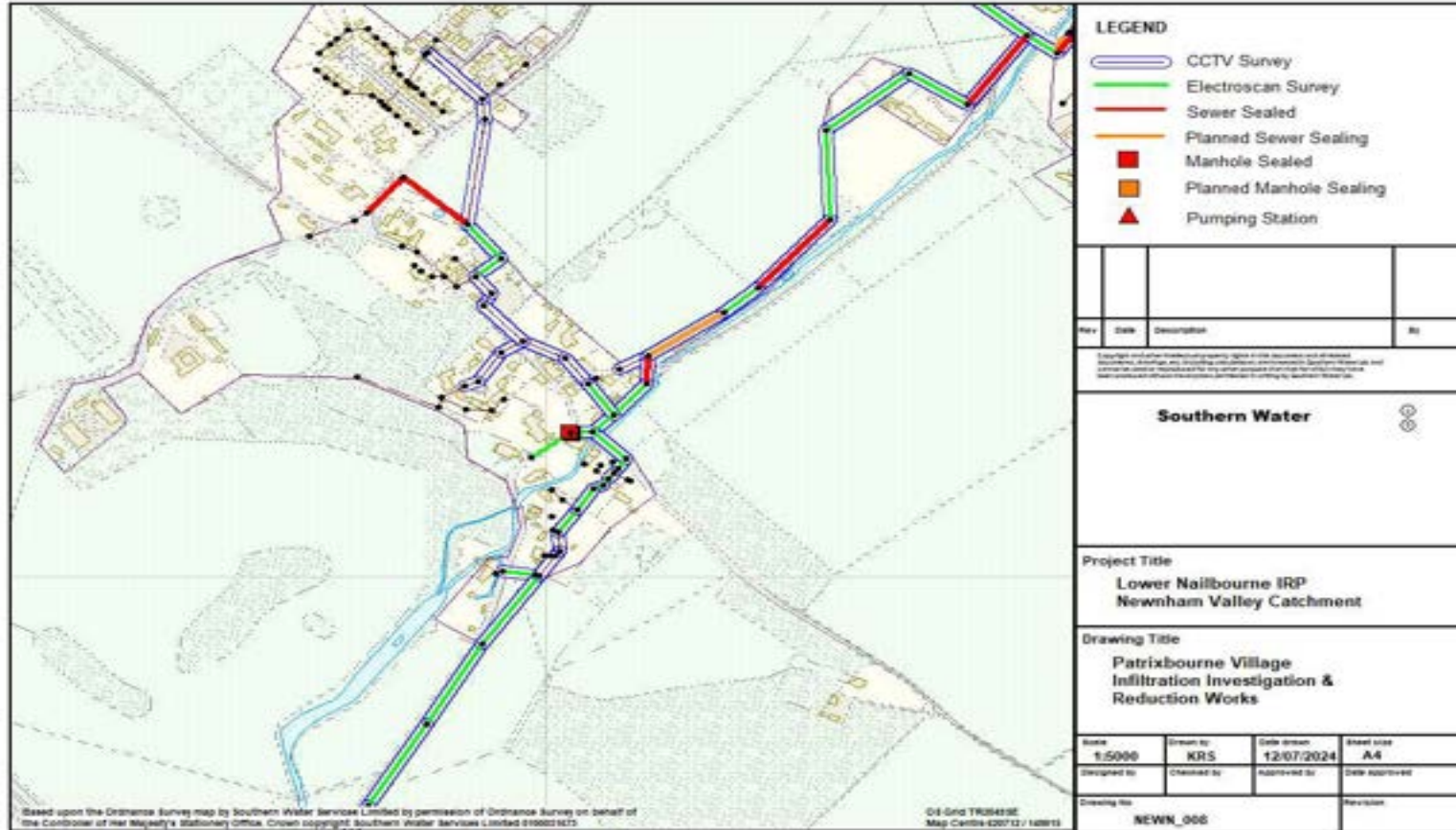
Detailed plan 7



Note – sewers shown as surveyed by CCTV or electroscan with no corresponding sealing work have been determined to not require rehabilitation.



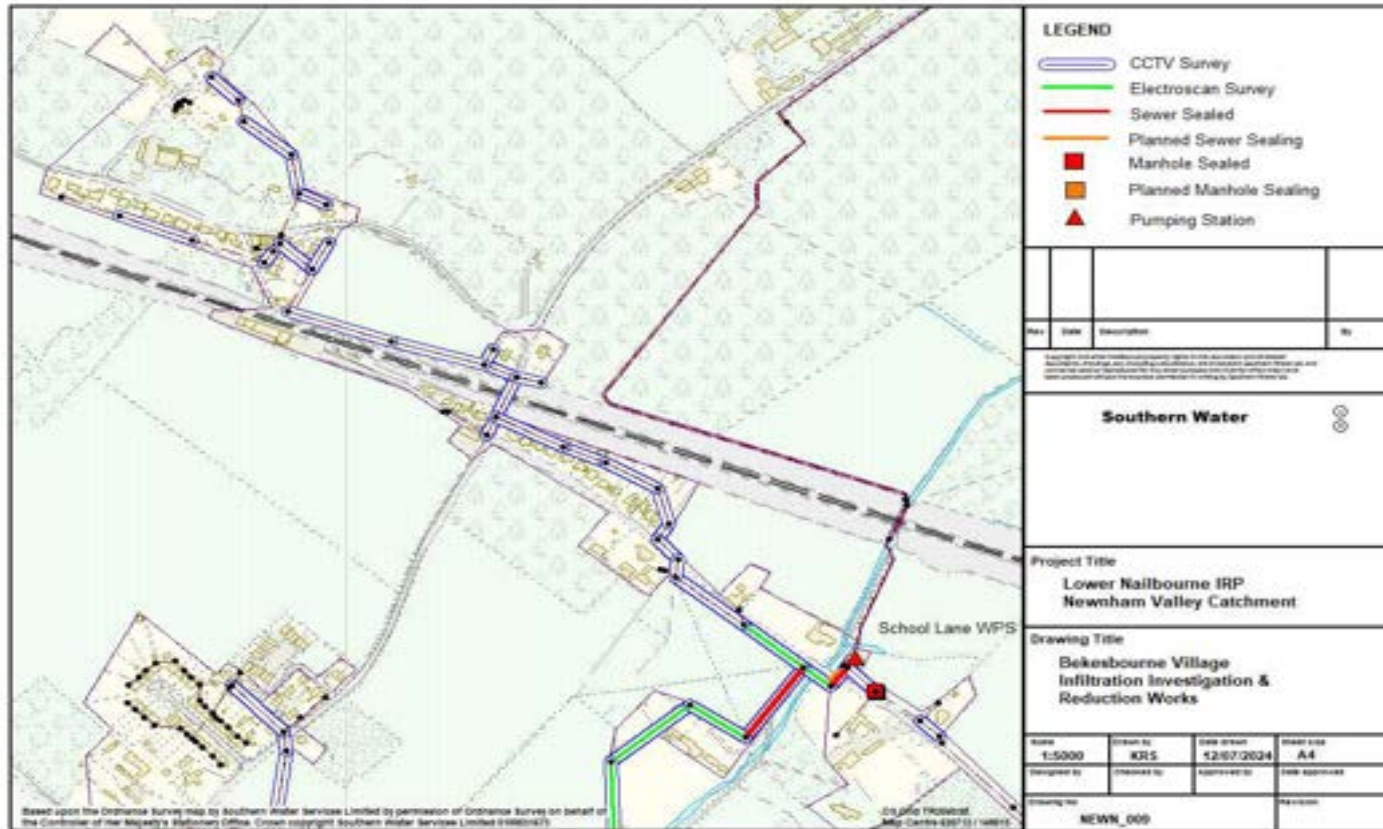
Detailed plan 8



Note – sewers shown as surveyed by CCTV or electroscan with no corresponding sealing work have been determined to not require rehabilitation.



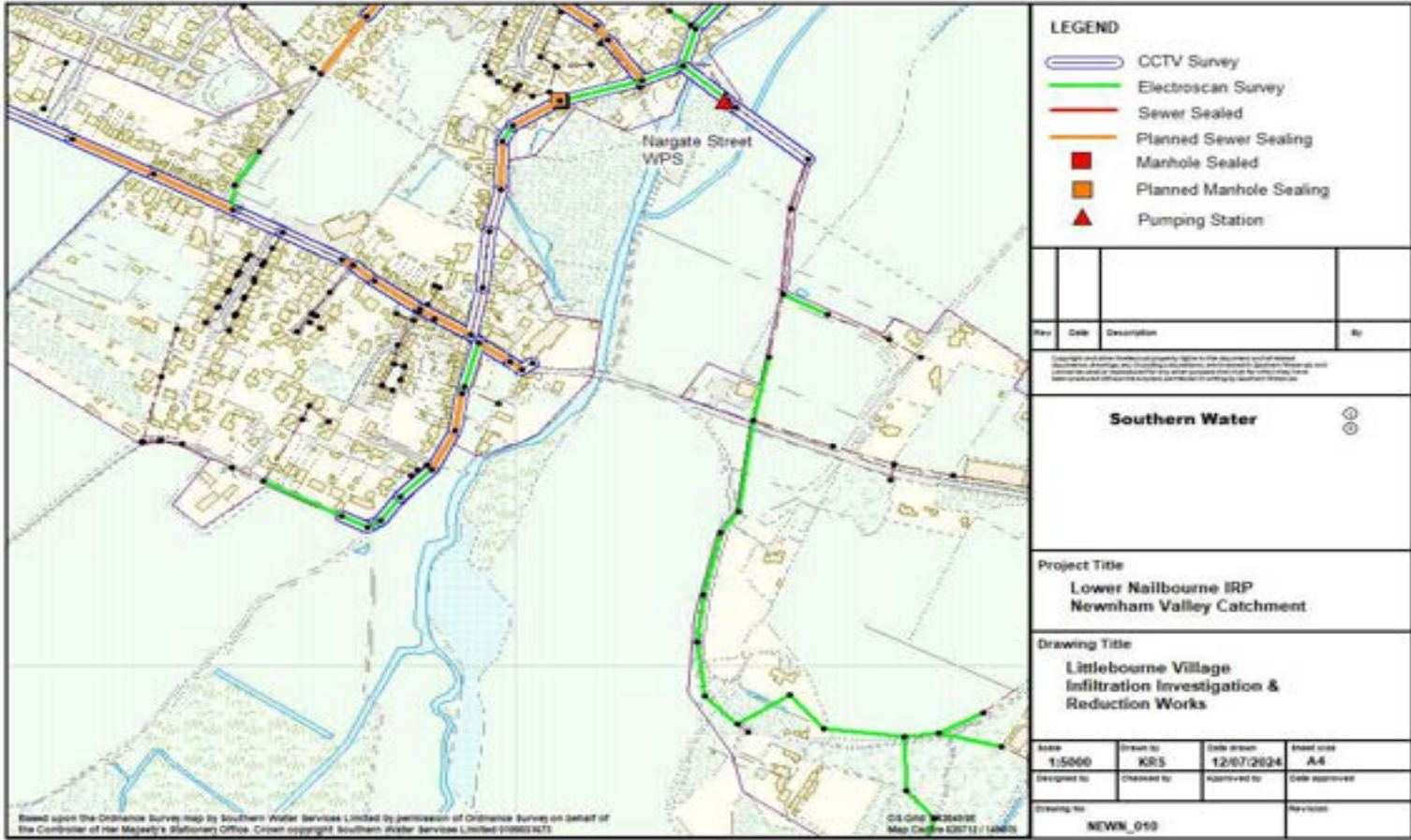
Detailed plan 9



Note – sewers shown as surveyed by CCTV or electroscan with no corresponding sealing work have been determined to not require rehabilitation.



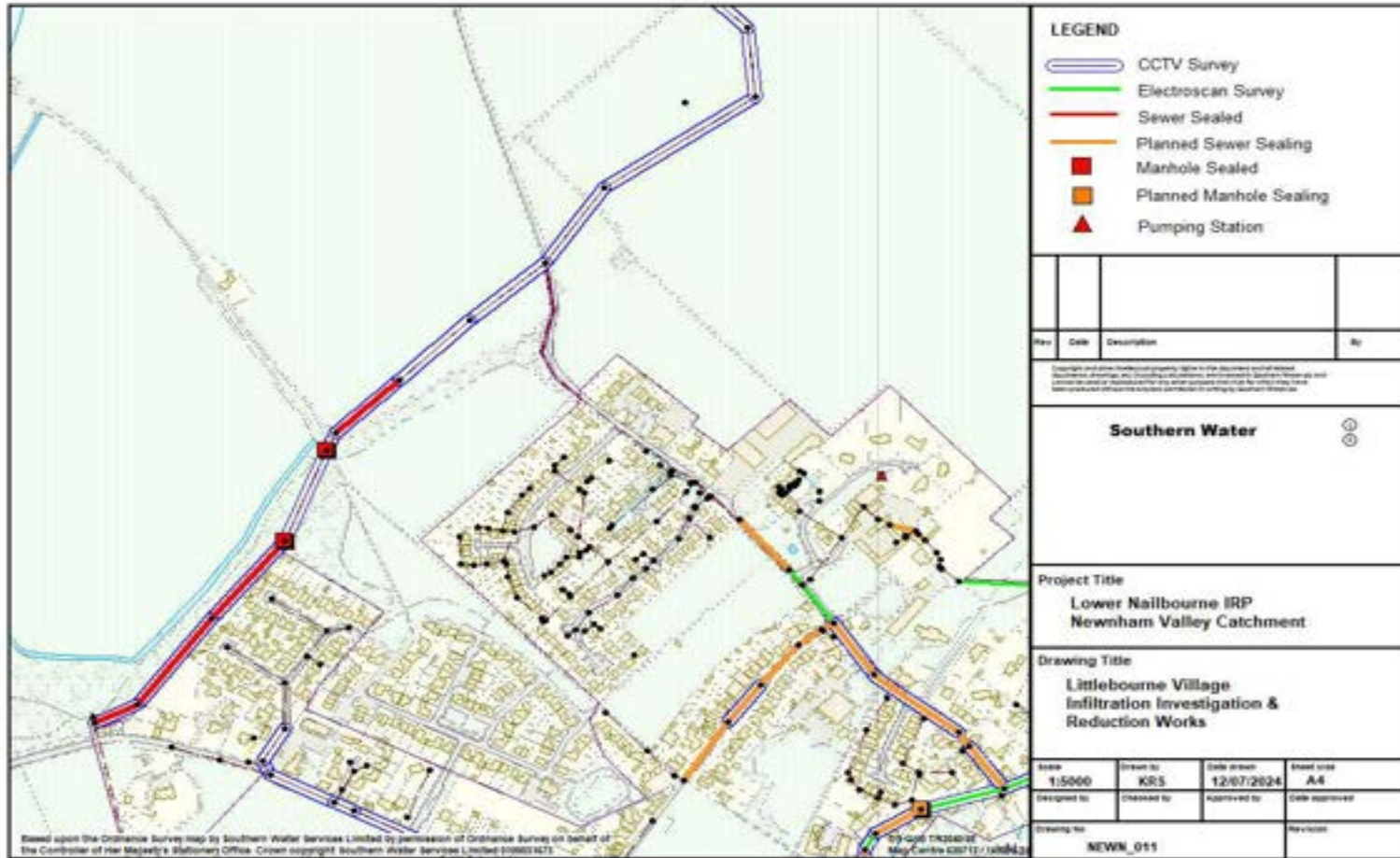
Detailed plan 10



Note – sewers shown as surveyed by CCTV or electroscan with no corresponding sealing work have been determined to not require rehabilitation.



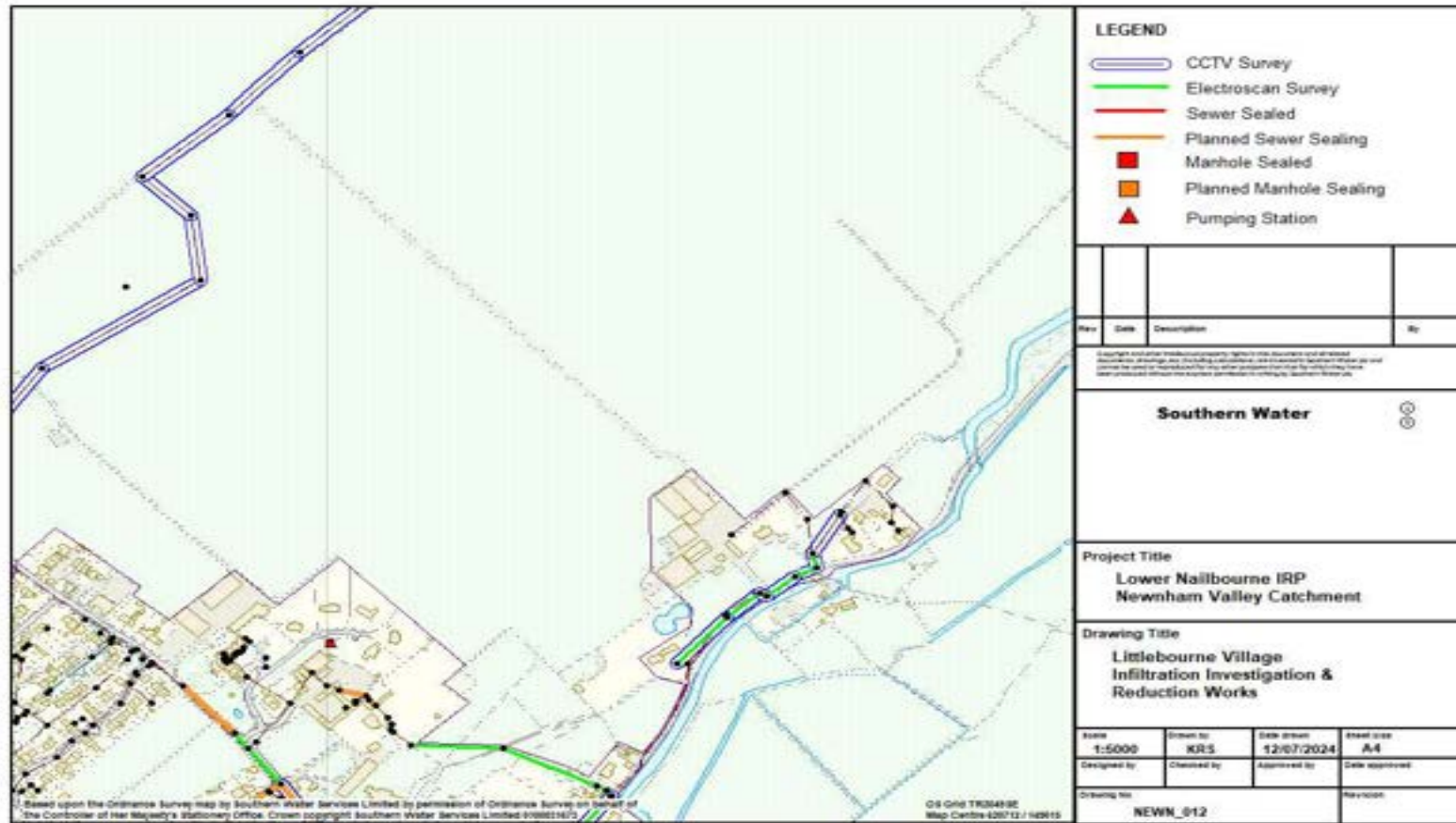
Detailed plan 11



Note – sewers shown as surveyed by CCTV or electroscan with no corresponding sealing work have been determined to not require rehabilitation.



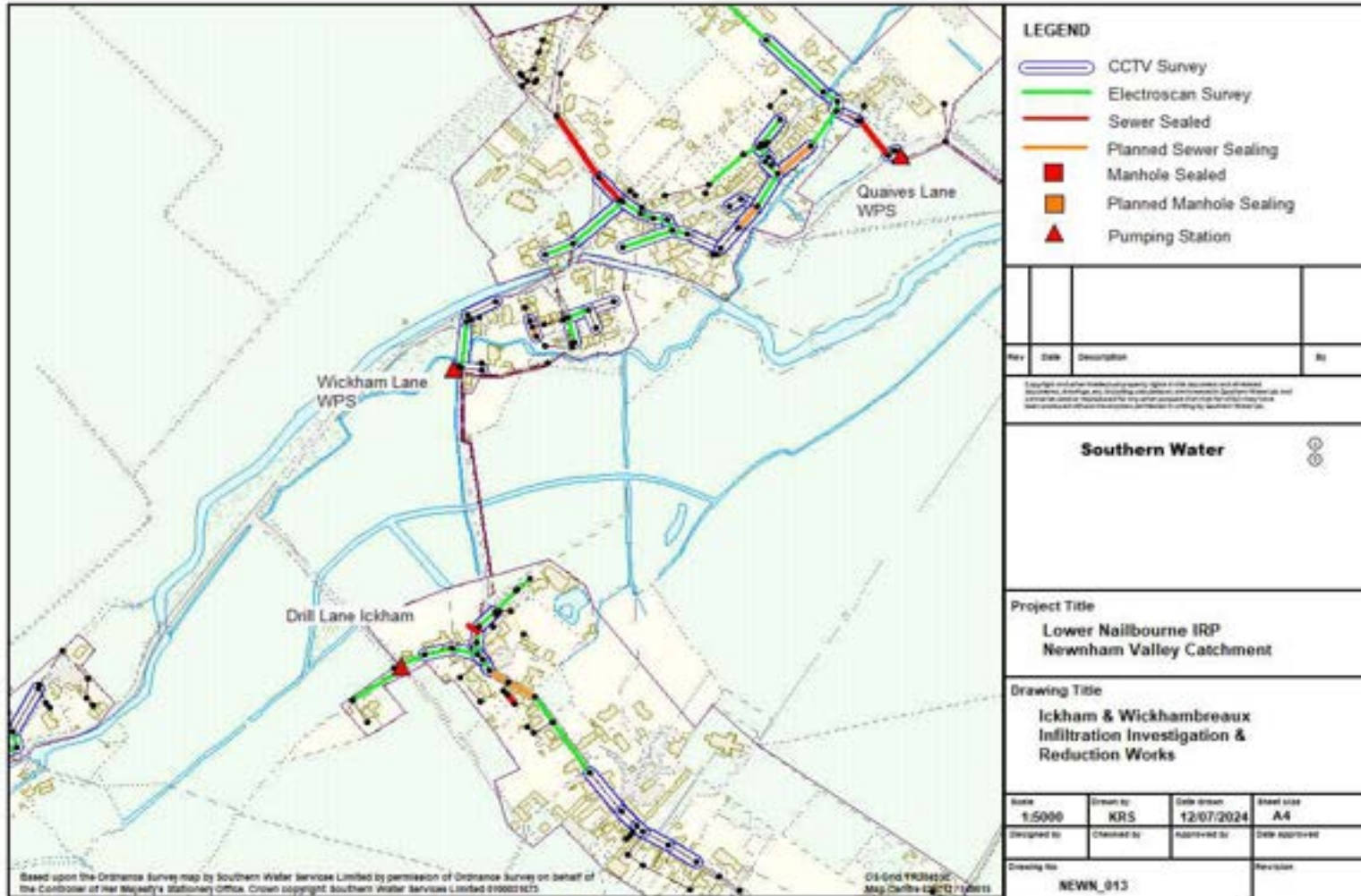
Detailed plan 12



Note – sewers shown as surveyed by CCTV or electroscan with no corresponding sealing work have been determined to not require rehabilitation.

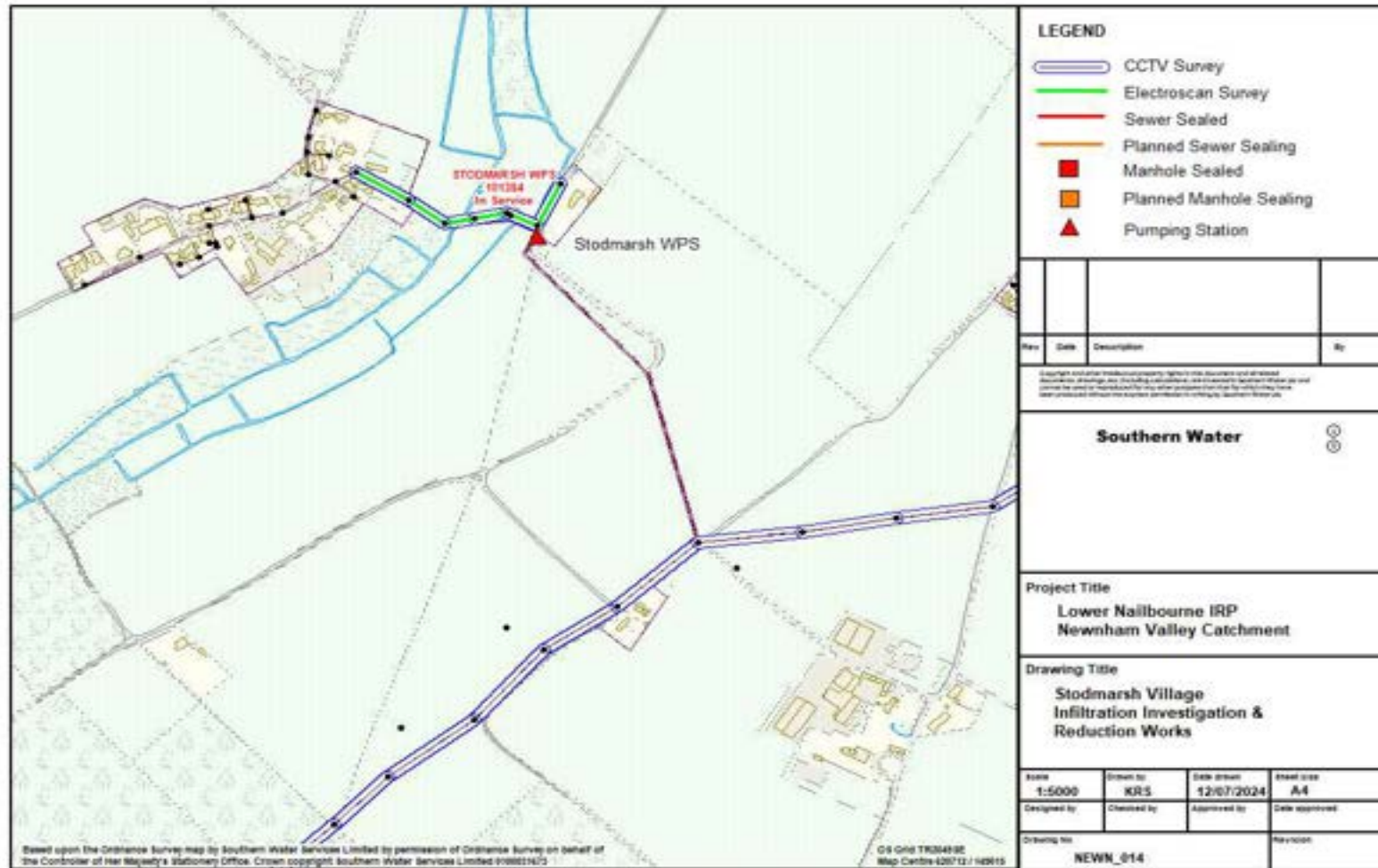


Detailed plan 13



Note – sewers shown as surveyed by CCTV or electroscan with no corresponding sealing work have been determined to not require rehabilitation.





Detailed plan 14

Note – sewers shown as surveyed by CCTV or electroscan with no corresponding sealing work have been determined to not require rehabilitation.

