

# Lavant Valley Infiltration Plan

Appendix A – Status of Planned Actions August 2025



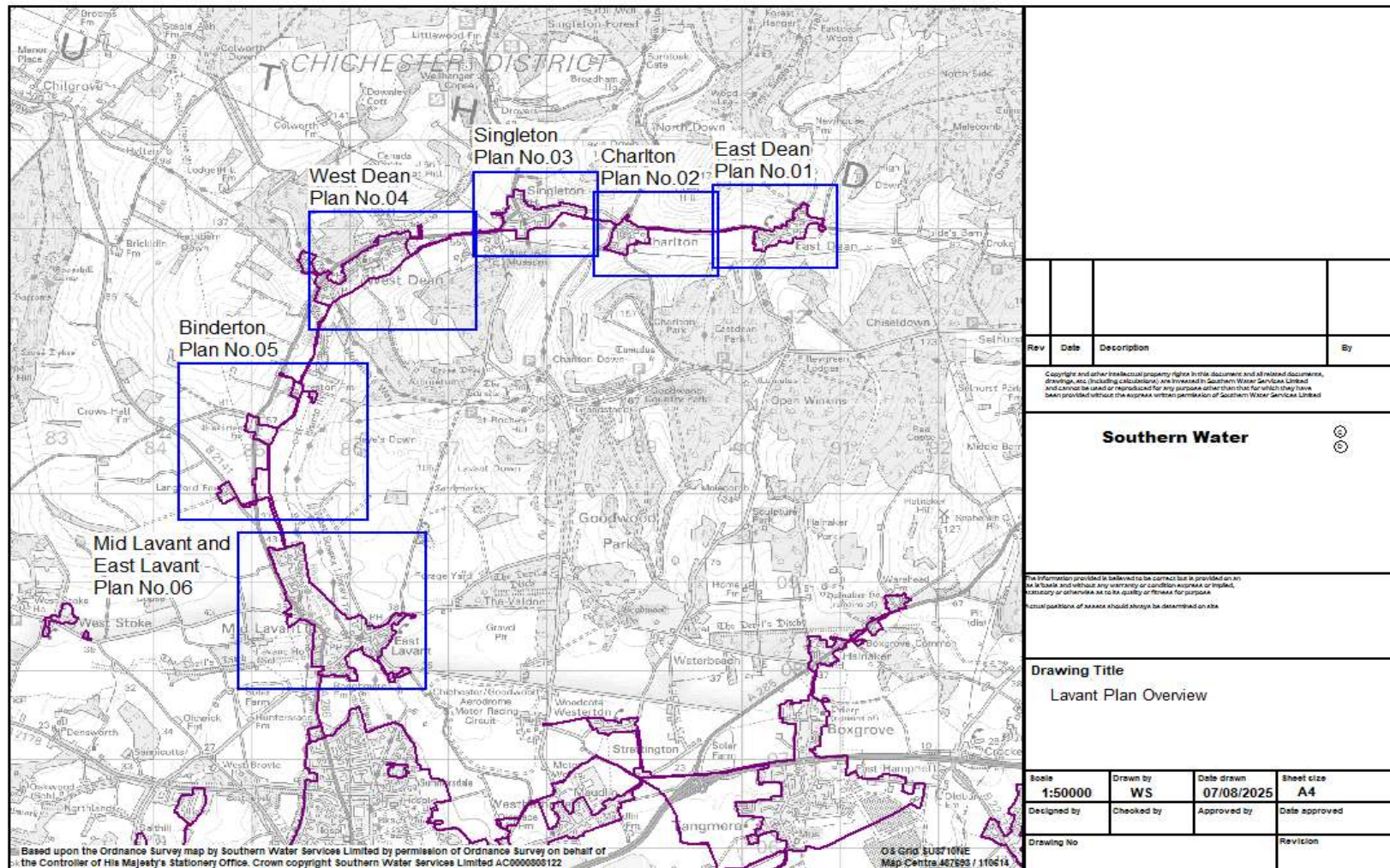
from  
**Southern  
Water** 

## Summary of work completed

Action	Km of sewer
Length Surveyed	1.52
Length with no work required	
Length Sealed	2.19
Length to be sealed	
Manholes sealed	
Manholes to be sealed	

Reporting Year	Surveyed (km)	Sewers Sealed (km)	Manholes Sealed
2014	2.54	0.13	3
2015	0.10	1.35	19
2016	1.04	0.29	14
2017	0.63	0.24	0
2018	0.03	0.24	0
2019	0	0.11	0
2020	0	0	0
2021	5.41	0	0
2022	0	0	0
2023	0	0	0
2024	0	0.55	0
Post 2024	0	0	0
2025	1.52	2.19	0
Total	9.75	2.91	36

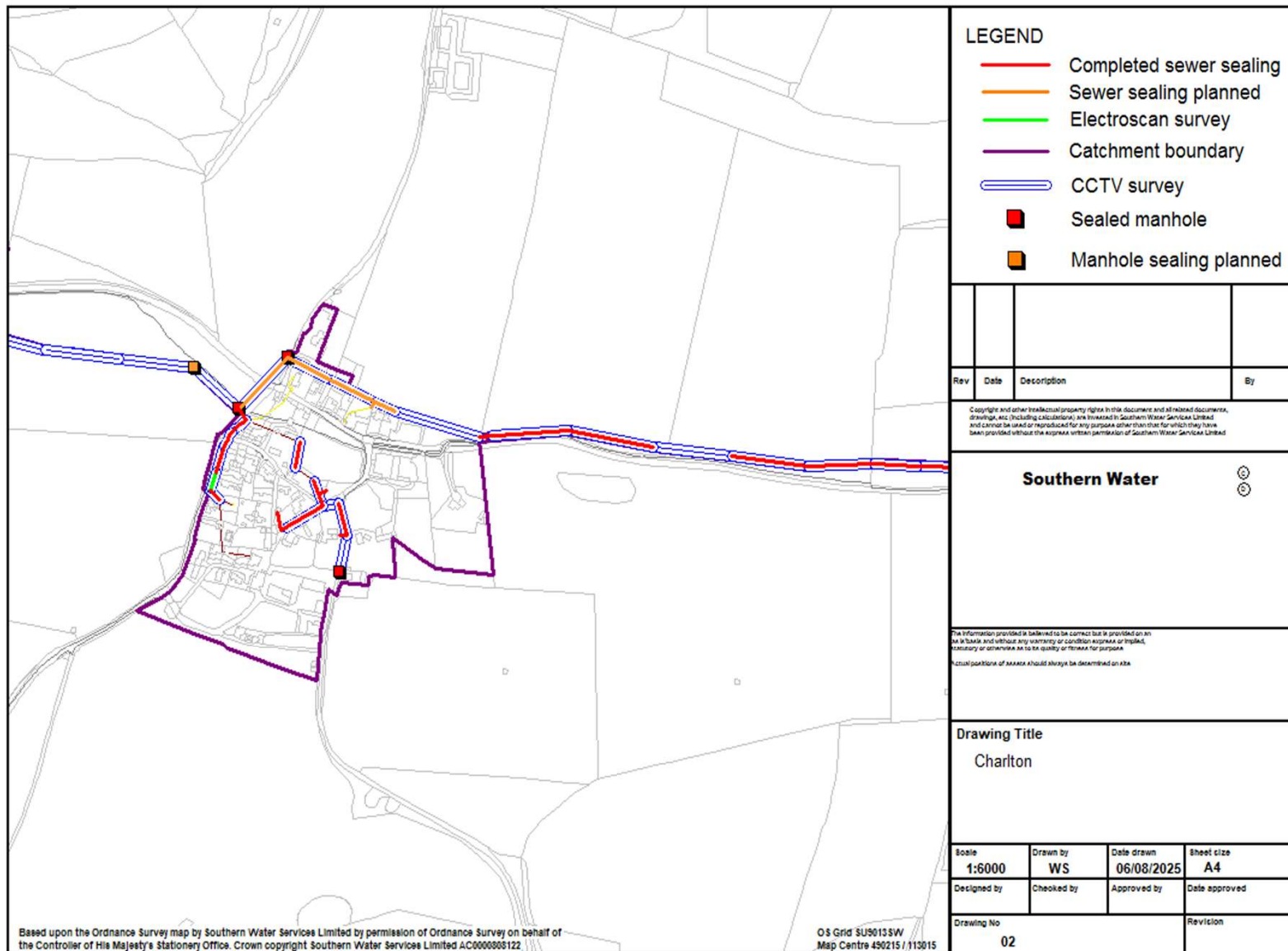
# Reference Plan



Note – sewers shown as surveyed by CCTV or electroscan (Green line) with no corresponding sealing work have been determined to not require rehabilitation. The use of storm harvester data will be used at some point in the future to target inspections and find infiltration



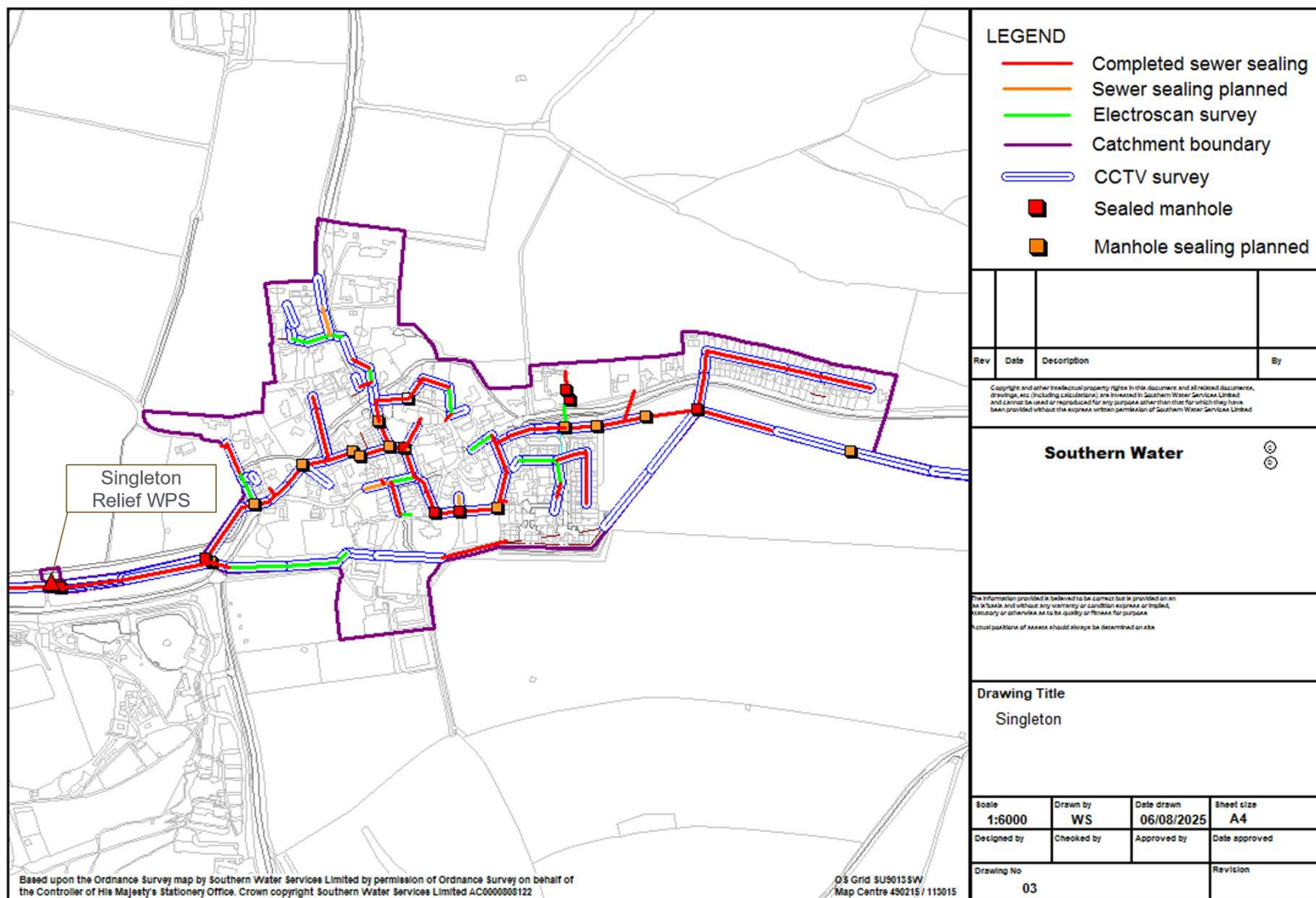




## Detailed plan 2

Note – sewers shown as surveyed by CCTV or electroscan with no corresponding sealing work have been determined to not require rehabilitation. The use of storm harvester data will be used at some point in the future to target inspections and find infiltration



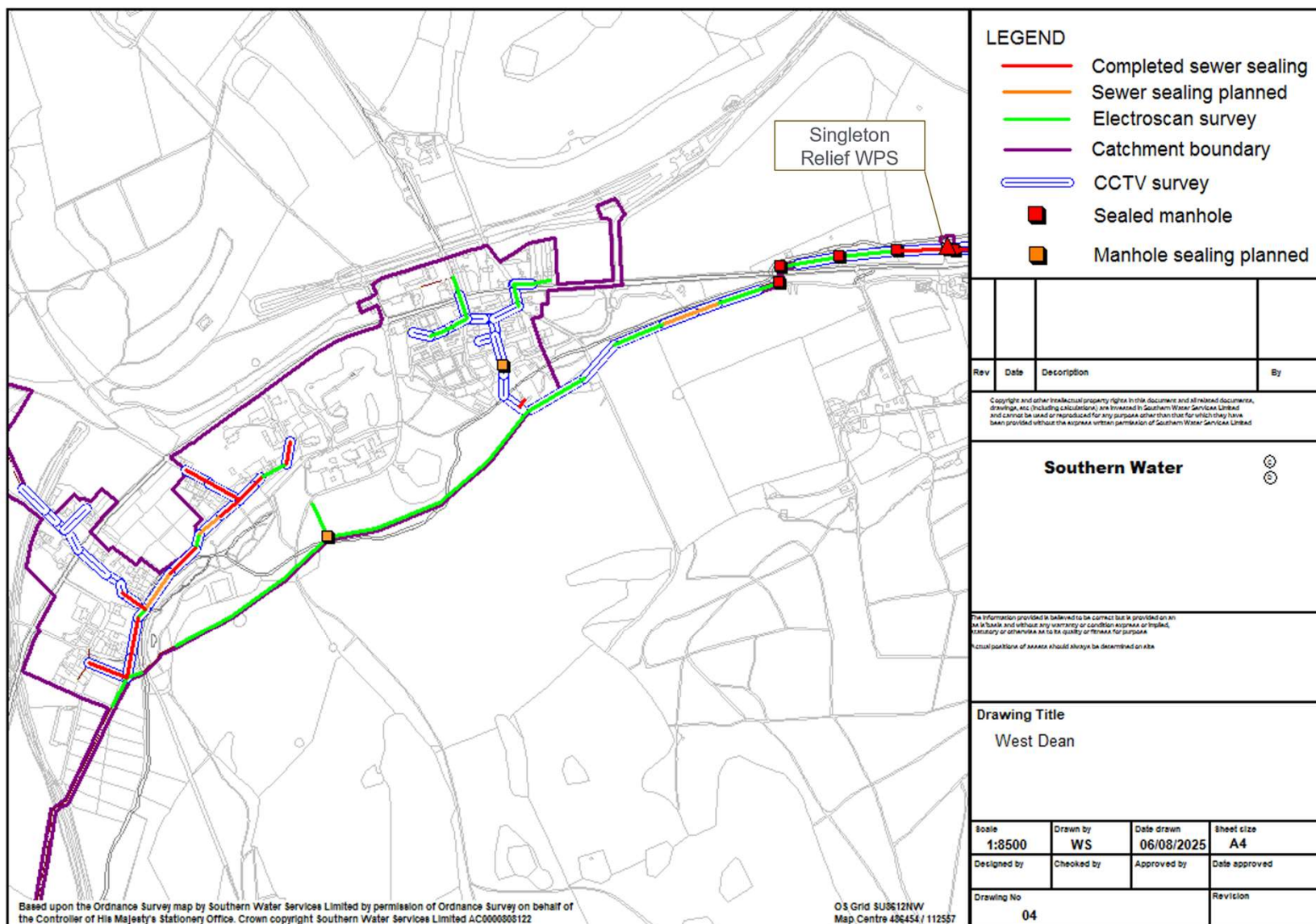


## Detailed plan 3

Note – sewers shown as surveyed by CCTV or electroscan with no corresponding sealing work have been determined to not require rehabilitation. The use of storm harvester data will be used at some point in the future to target inspections and find infiltration



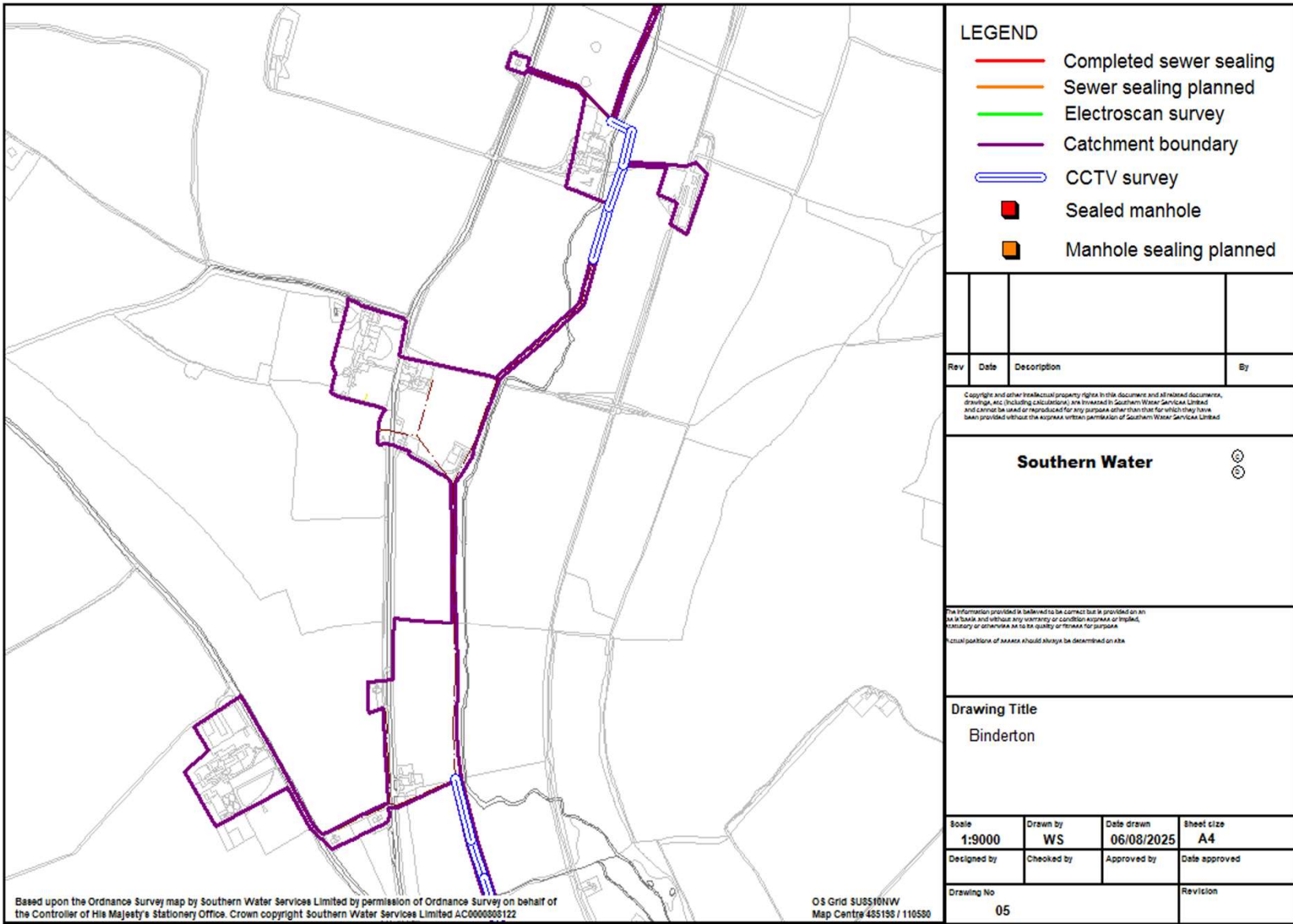
## Detailed plan 4



Note – sewers shown as surveyed by CCTV or electroscan with no corresponding sealing work have been determined to not require rehabilitation. The use of storm harvester data will be used at some point in the future to target inspections and find infiltration







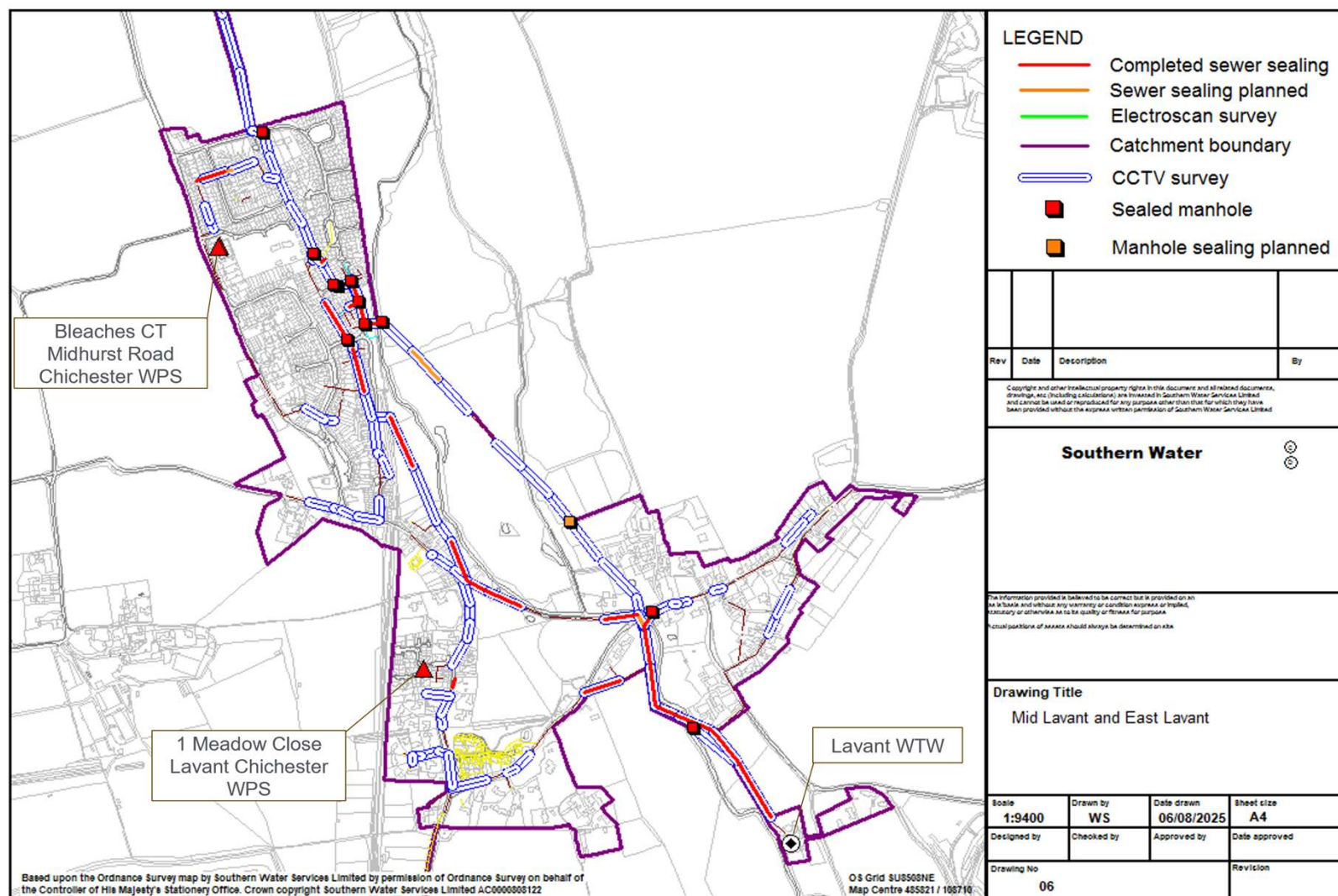
## Detailed plan 5

Note – sewers shown as surveyed by CCTV or electroscan with no corresponding sealing work have been determined to not require rehabilitation. The use of storm harvester data will be used at some point in the future to target inspections and find infiltration





## Detailed plan 6



Note – sewers shown as surveyed by CCTV or electroscan with no corresponding sealing work have been determined to not require rehabilitation. The use of storm harvester data will be used at some point in the future to target inspections and find infiltration

