

Alkham Valley Infiltration Plan

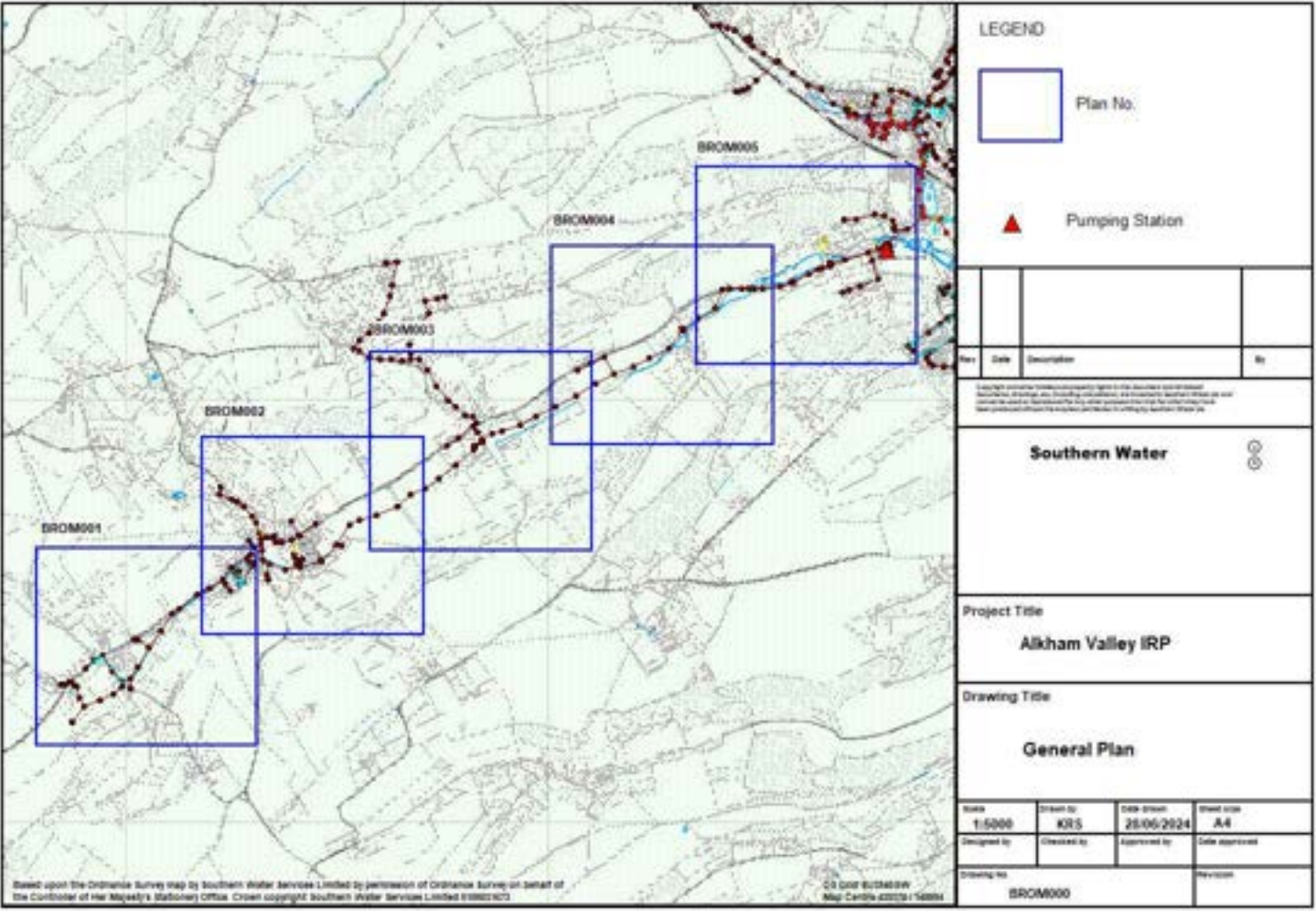
Appendix A – Status of Planned Actions July 2024



from
**Southern
Water** 

The Southern Water logo graphic consists of three stylized, wavy blue lines of varying lengths, positioned to the right of the text "Southern Water".

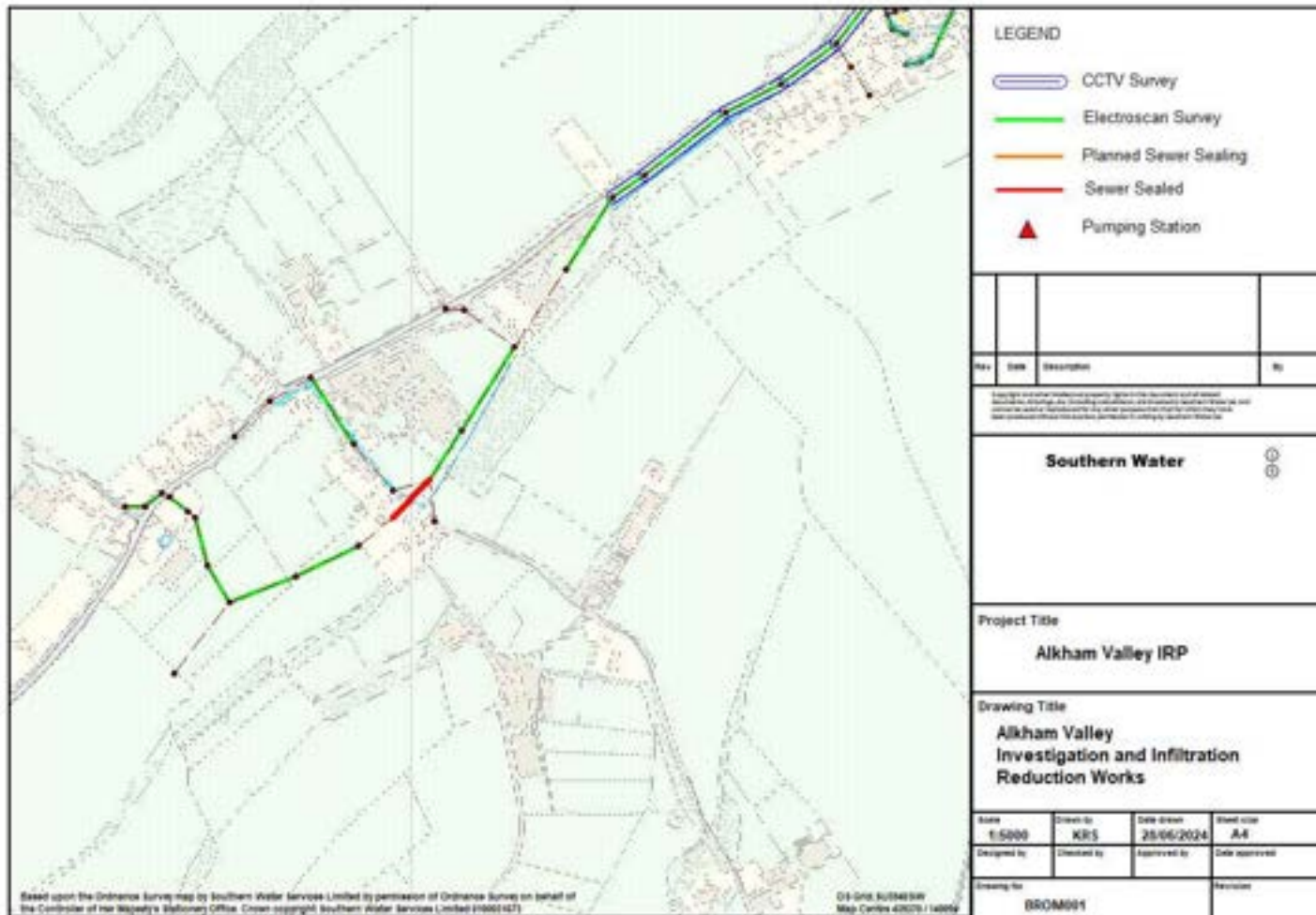
Reference Plan



Action	Km
Length Surveyed	7.67
Length with no work required	3.8
Length Sealed	0.79
Length to be sealed	3.0
Manholes sealed	1
Manholes to be sealed	0



Detailed plan 1

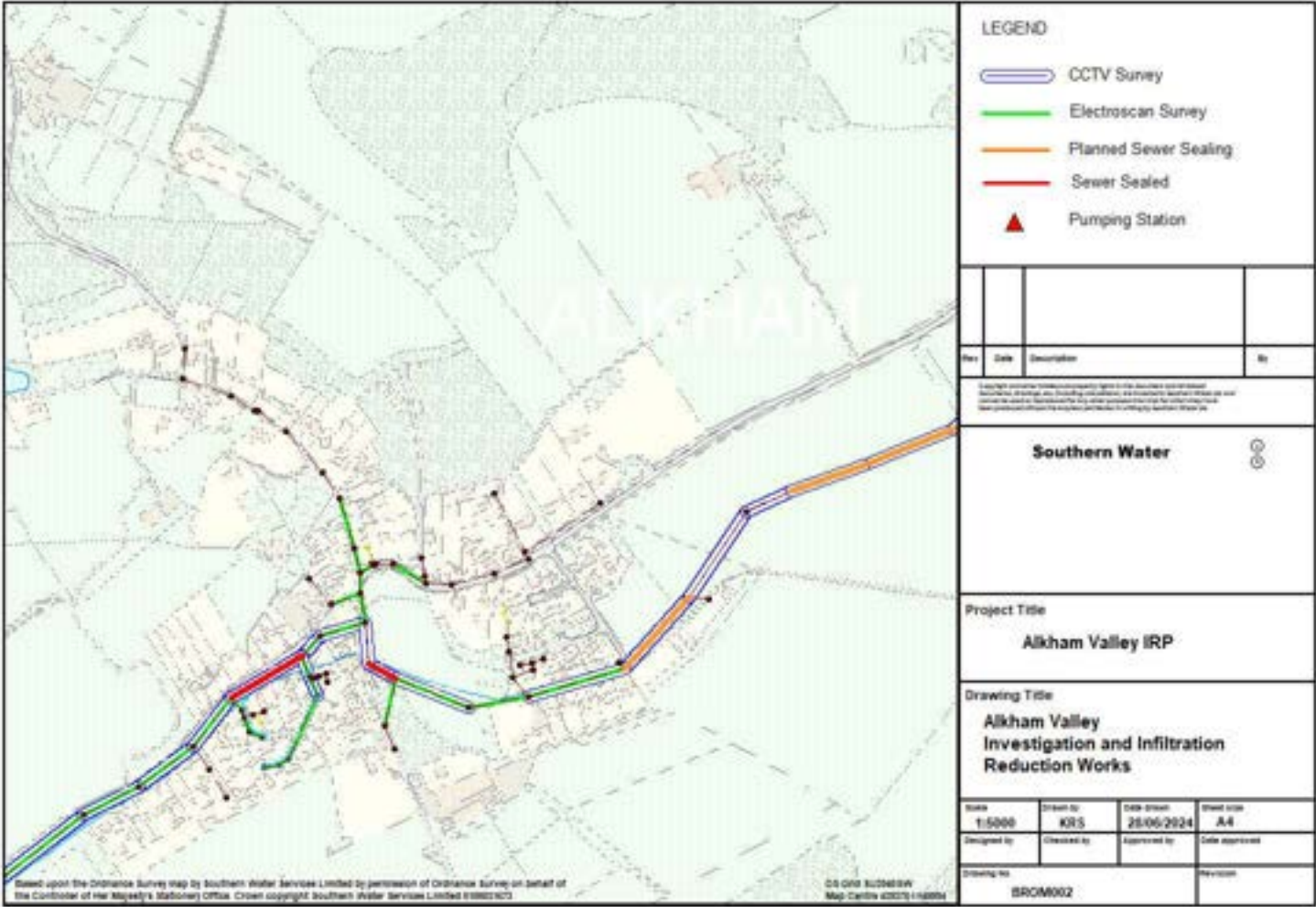


Note – sewers shown as surveyed by cctv or electroscan with no corresponding sealing work have been determined to not require rehabilitation.

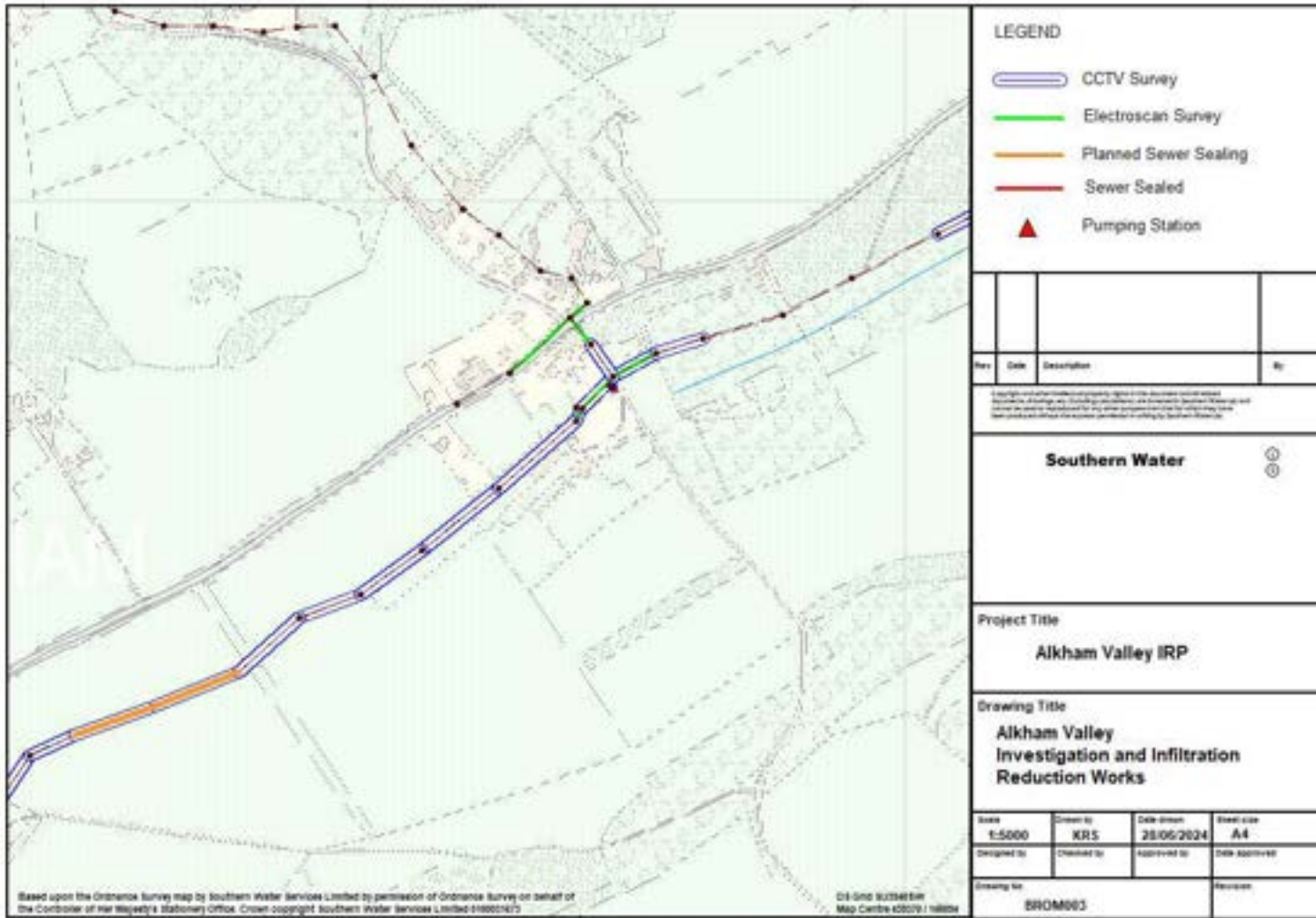


Detailed plan 2

Note – sewers shown as surveyed by cctv or electroscan with no corresponding sealing work have been determined to not require rehabilitation.



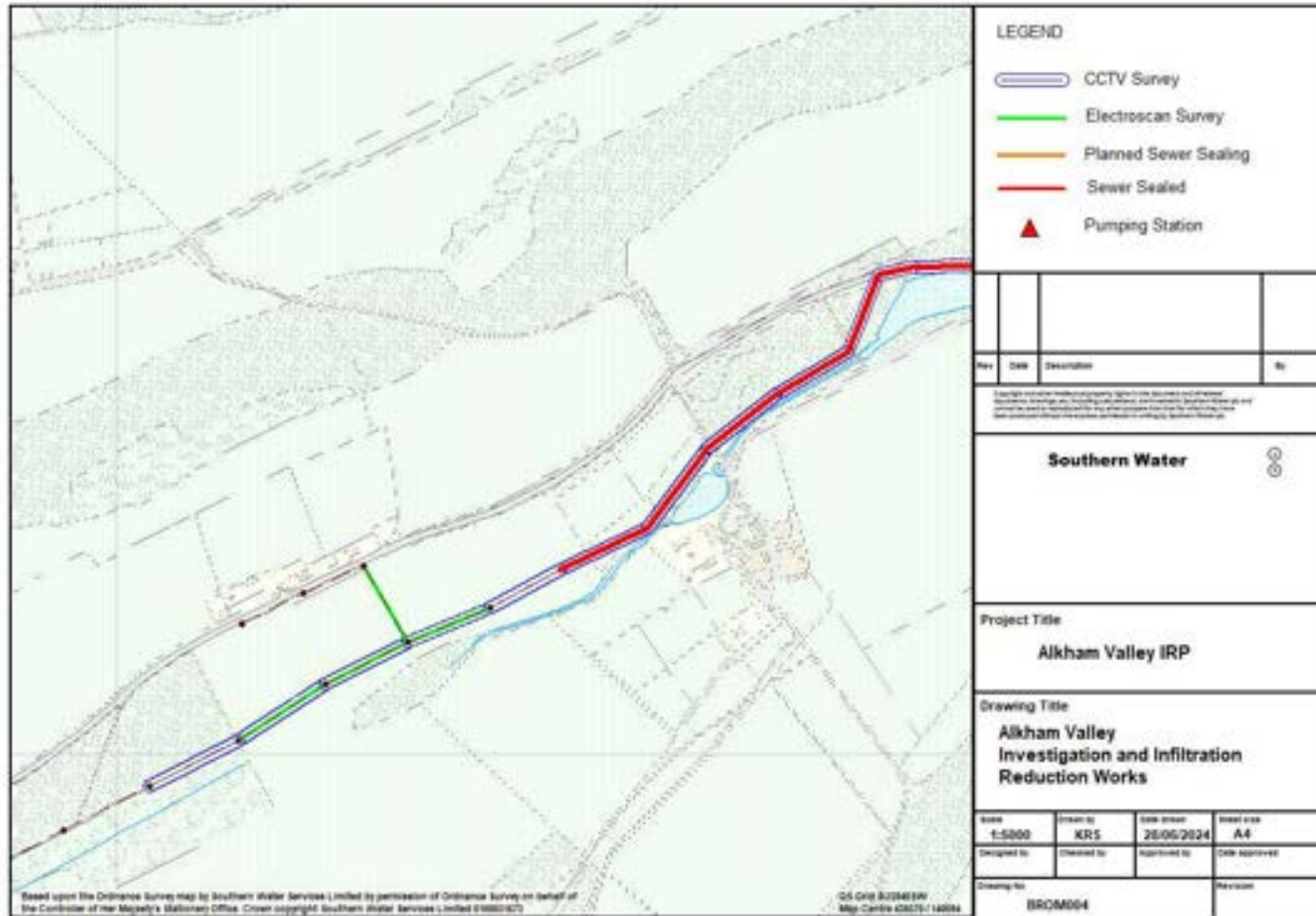
Detailed plan 3



Note – sewers shown as surveyed by cctv or electroscan with no corresponding sealing work have been determined to not require rehabilitation.



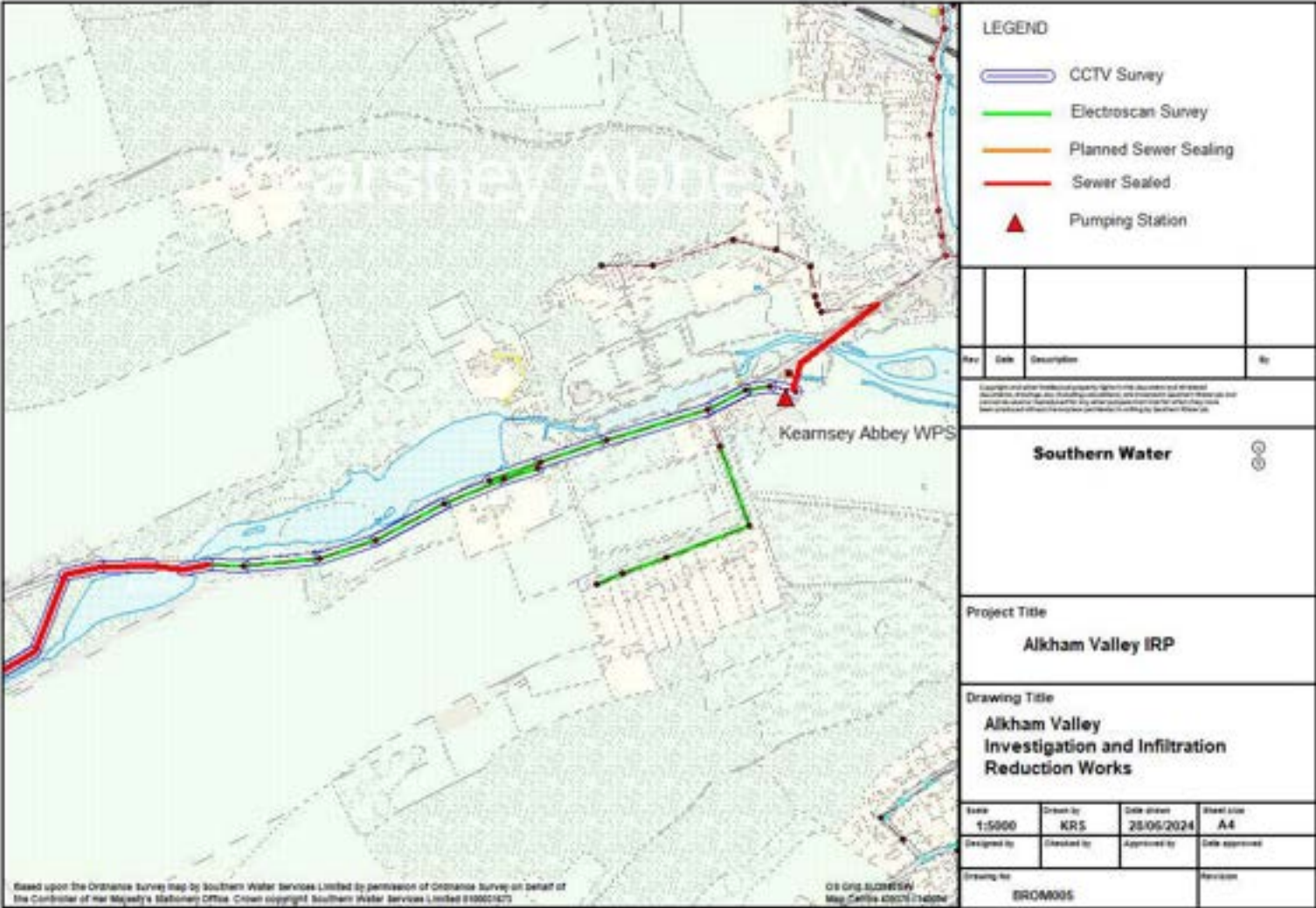
Detailed plan 4



Note – sewers shown as surveyed by cctv or electroscan with no corresponding sealing work have been determined to not require rehabilitation.



Detailed plan 5



Note – sewers shown as surveyed by cctv or electroscan with no corresponding sealing work have been determined to not require rehabilitation.

