

# How to convert your water butt into a slow-drain water butt



from  
Southern  
Water



Watch our slow-drain water butt tutorial video [here](#)

The three-minute DIY that's good for you, your garden and the environment.

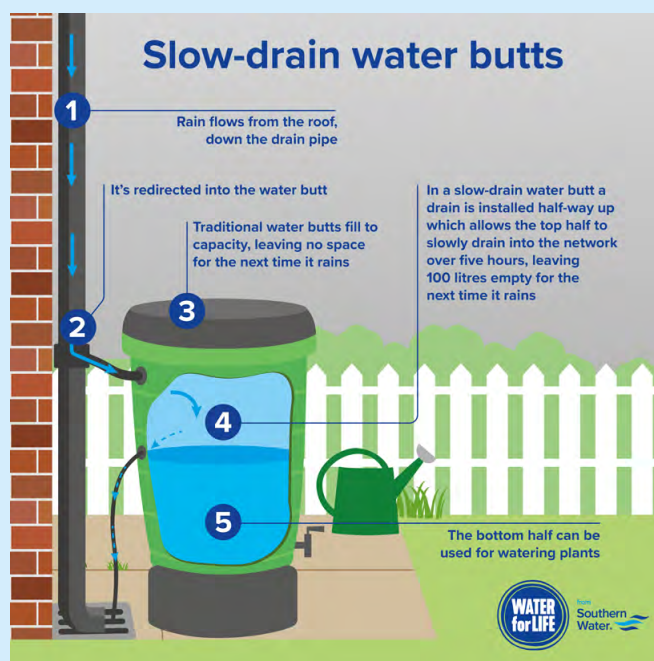
A great way to slow the flow of rainwater, is to have a slow-drain water butt in your garden.

**Slow-drain water butts are a new concept, and they're a game changer when it comes to water management.**

If you have a water butt already or are planning on getting one, converting it to slow drain can offer lots of additional benefits.

A slow drain water butt is highly unlikely to overflow, this means;

- No waterlogged garden or flowerbeds
- No flooding on paths and walkways
- Improved water efficiency for your household or business
- A slower flow of rainwater into the sewer system which will reduce flooding and storm overflows



## It's quick and easy!

Converting your water butt to a slow-drain couldn't be easier, in fact it takes less than three minutes!

### Things to consider before you start

You can decide how much water you want to be stored in your water butt and how much you want to slow drain away. Decide this ahead of time, as this will determine where you drill your hole in the water butt. We recommend about halfway down.

**Remember:** any water below the hole will be stored in the water butt, any water above will slowly drain back into the network over four to six hours. This prevents the system becoming overwhelmed, which typically happens when large amounts of water enter the system too quickly

If your water butt is full, drain it to below where you plan to drill your hole, or you might get wet!

# You will need

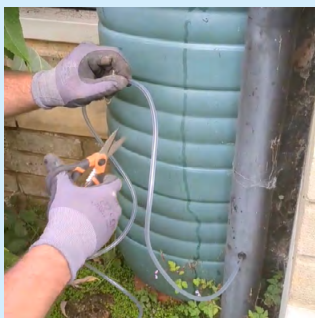
- A drill with 10mm drill bit
- Approx. 1.5m of 6mm black tubing
- 2x 10mm grommets
- Scissors
- Cable ties (optional)
- A filter to keep debris out of the tube (optional)



## Step 1

Drill a hole in the lower part of your guttering downpipe, making sure this is much lower than the hole you will drill in your water butt, so gravity can do its job and drain the water downward.

Insert a grommet into the hole then push one end of your tubing into the grommet, about an inch deep. It is important not to push the tube in too far, or the water can't flow through it.



## Step 2

Measure how long your tubing will need to be, to reach where you want to drill the hole in your water butt.

**Remember:** any water above the hole will drain away, and any water below it will be saved in the water butt for you to use.

Cut your tubing to fit, making sure you add a couple of extra inches for security.

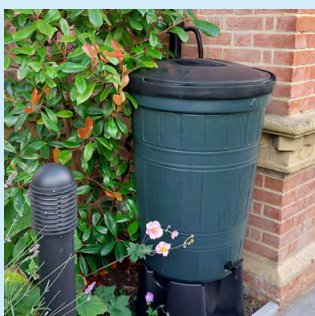


## Step 3

Drill a hole in your water butt, insert a grommet into the hole then push the free end of your tubing into the grommet, about an inch deep.

You can add a filter to the end of the pipe that sits inside the water butt to keep out debris

If you like, use cable ties to attach the tubing to your downpipe.



## Finished!

Enjoy your new water efficient slow-drain water butt!

Thank you for helping us to reduce storm overflows in your area.



For more information on how you can help slow the flow and reduce storm overflows, [click here](#).