

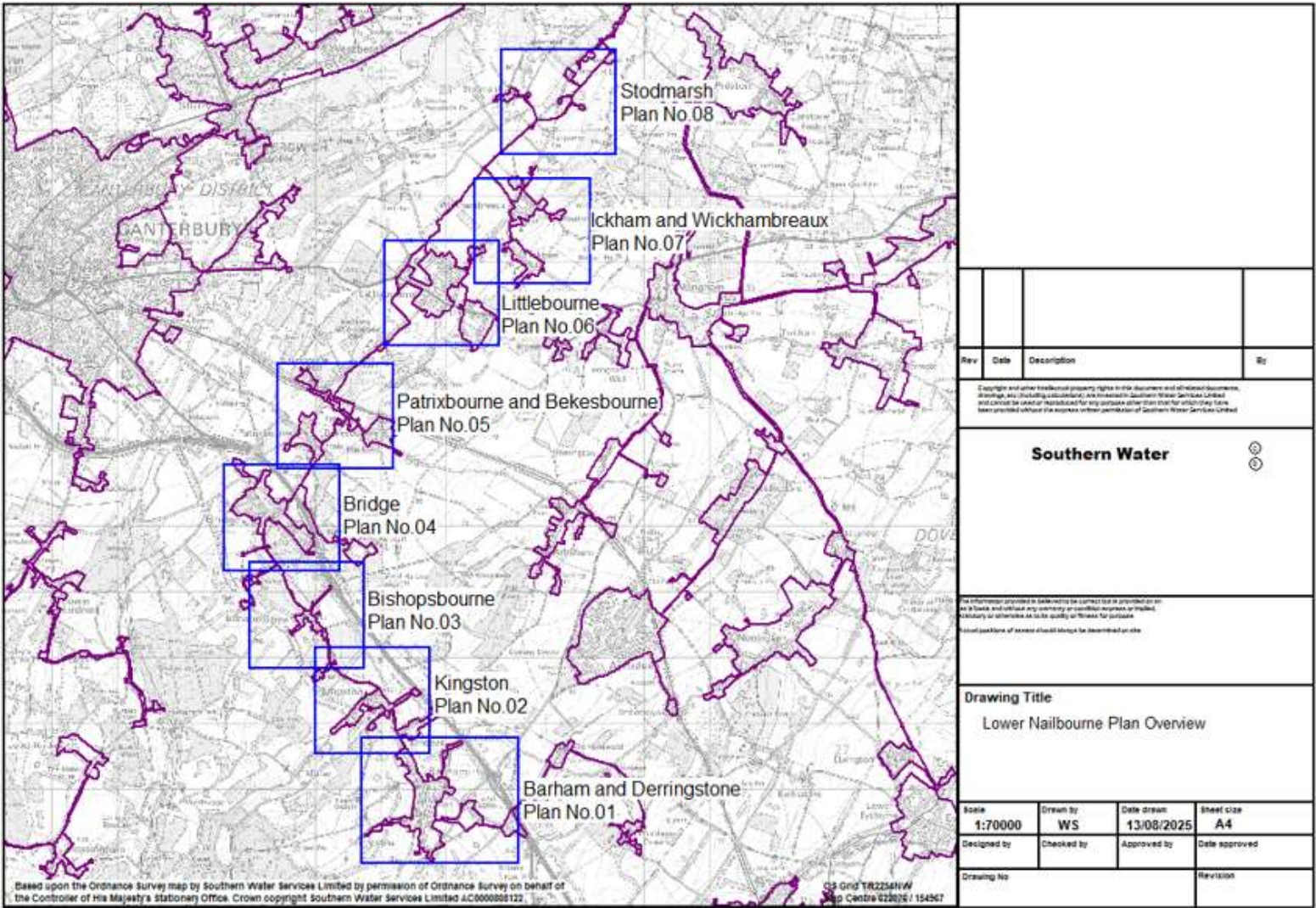
Lower Nailbourne Infiltration Plan

Appendix A – Status of Planned Actions August 2025



from
**Southern
Water** 

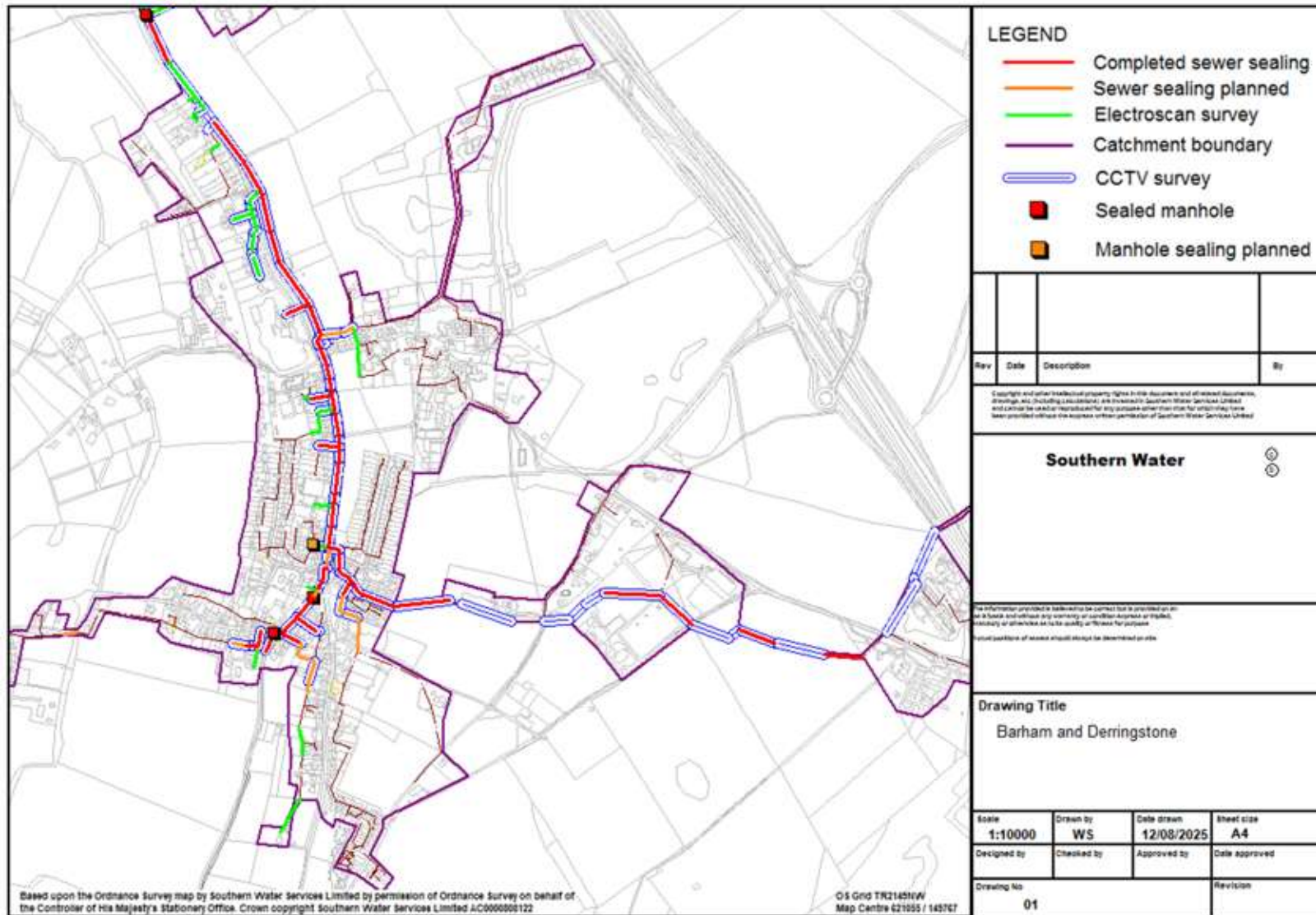
Reference Plan



Action	km
Length Surveyed	86.32
Length with no work required	73.76
Length sealed	10.175
Length to be sealed	2.27
Manholes sealed	7
Manholes to be sealed	0



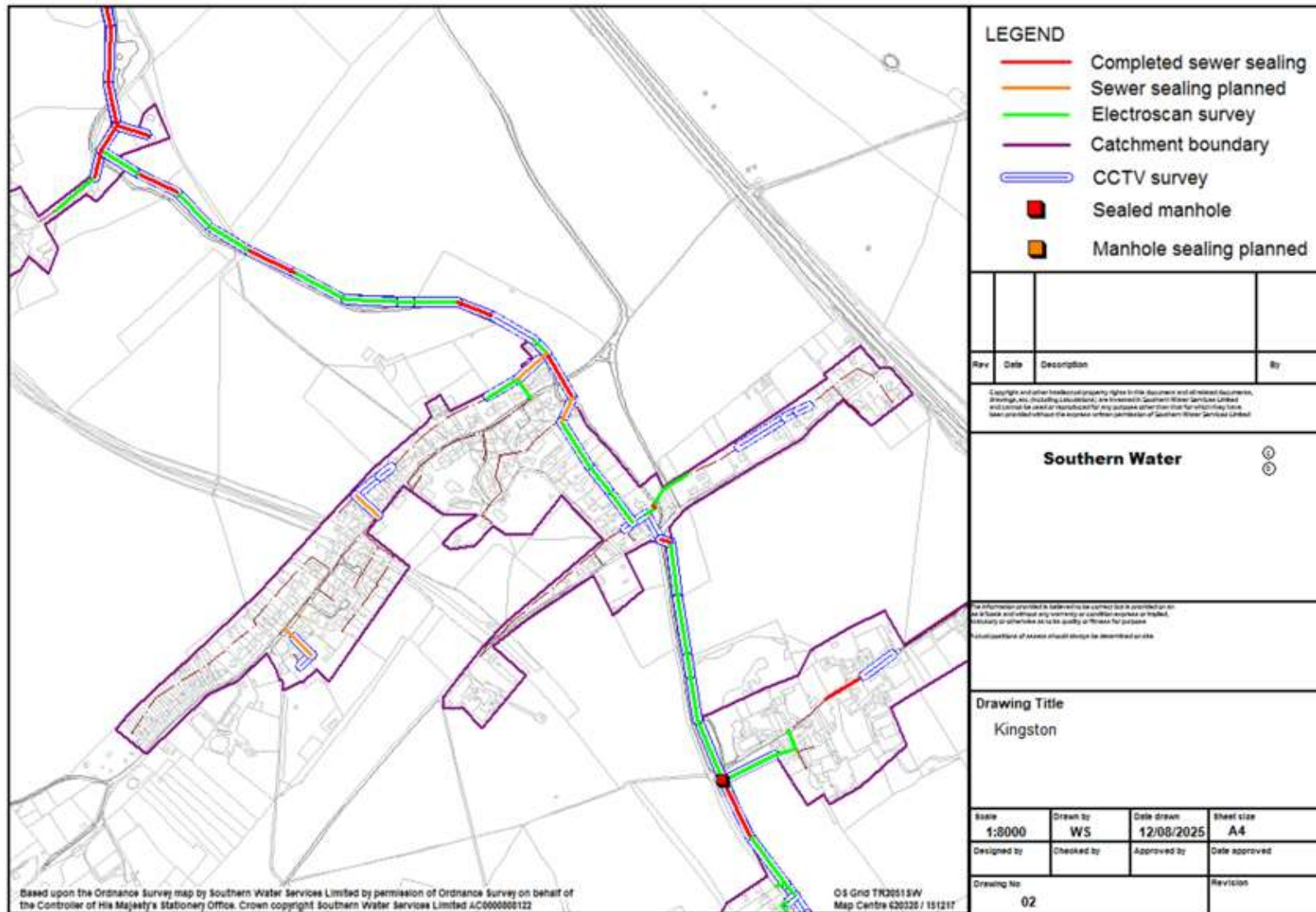
Detailed plan 1



Note – sewers shown as surveyed by CCTV or electroscan with no corresponding sealing work have been determined to not require rehabilitation.



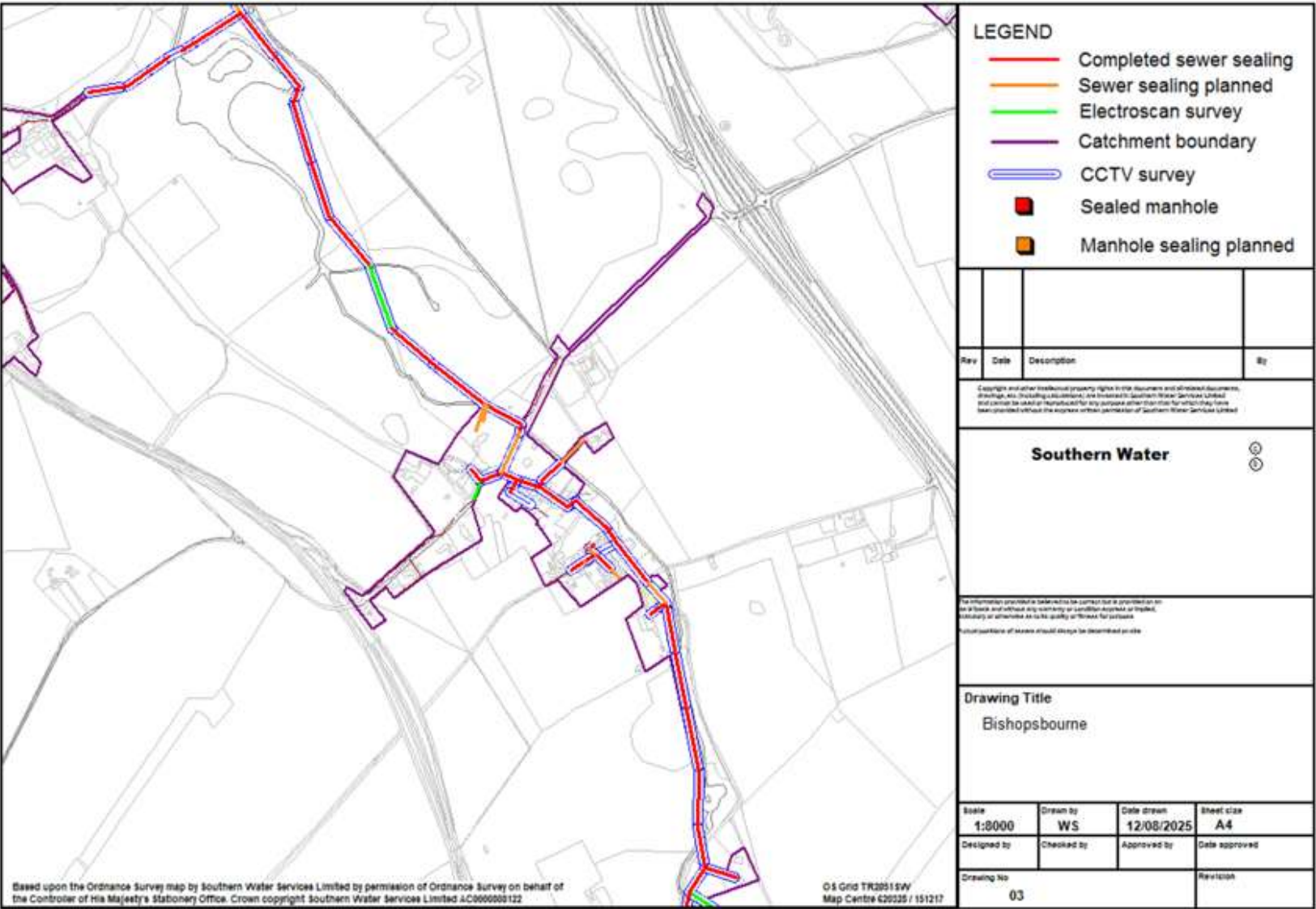
Detailed plan 2



Note – sewers shown as surveyed by CCTV or electroscan with no corresponding sealing work have been determined to not require rehabilitation.



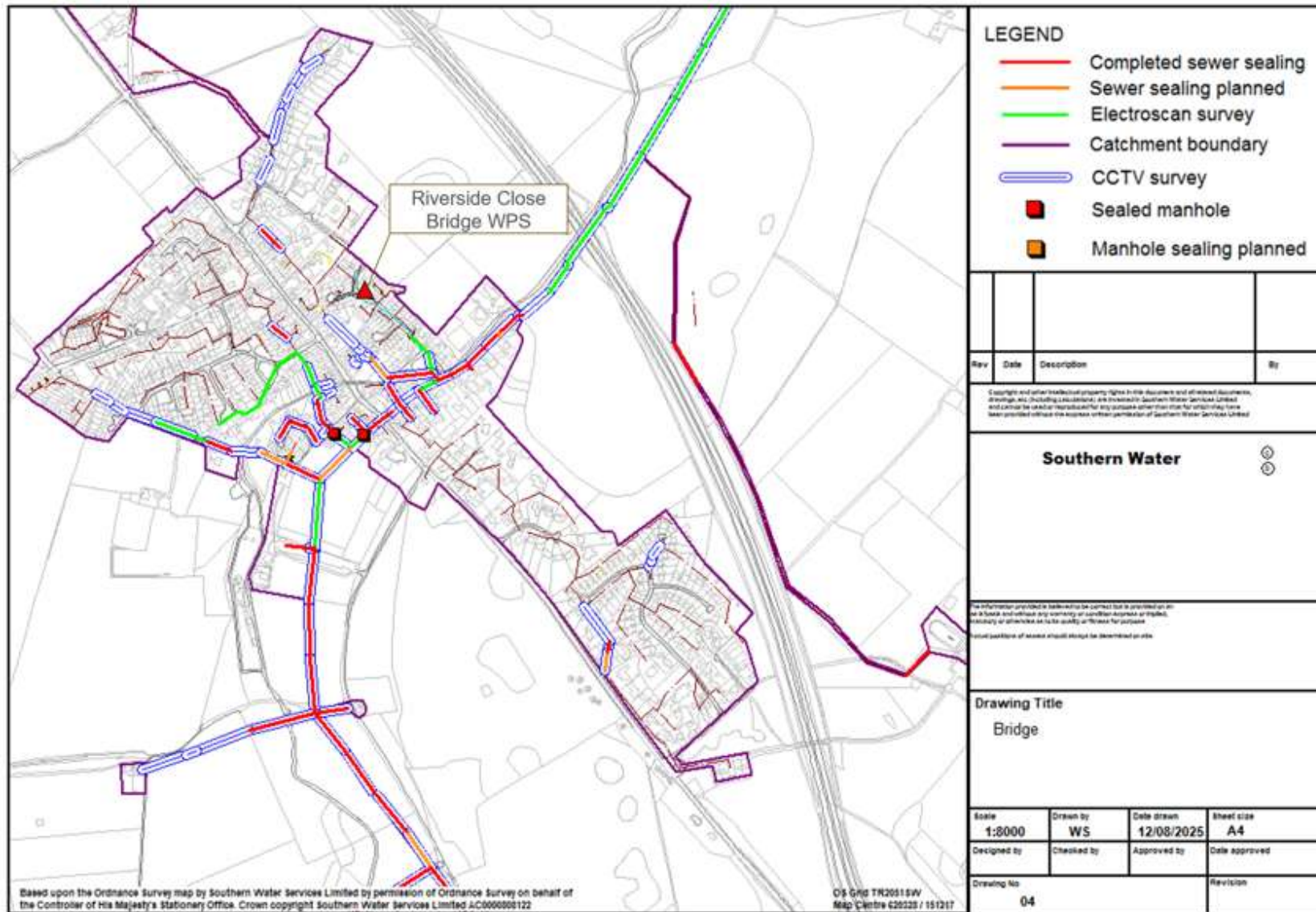
Detailed plan 3



Note – sewers shown as surveyed by CCTV or electroscan with no corresponding sealing work have been determined to not require rehabilitation.



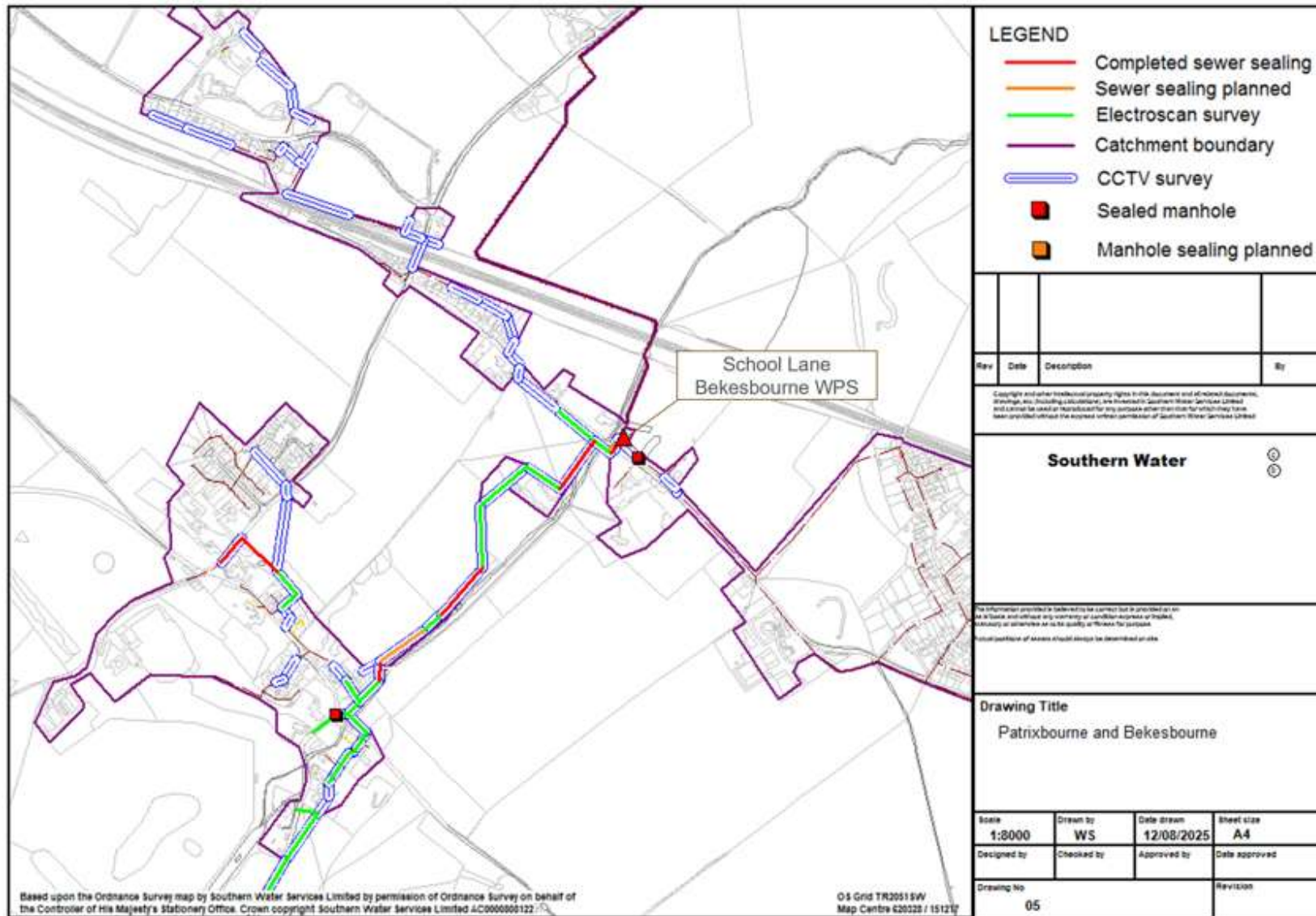
Detailed plan 4



Note – sewers shown as surveyed by CCTV or electroscan with no corresponding sealing work have been determined to not require rehabilitation.



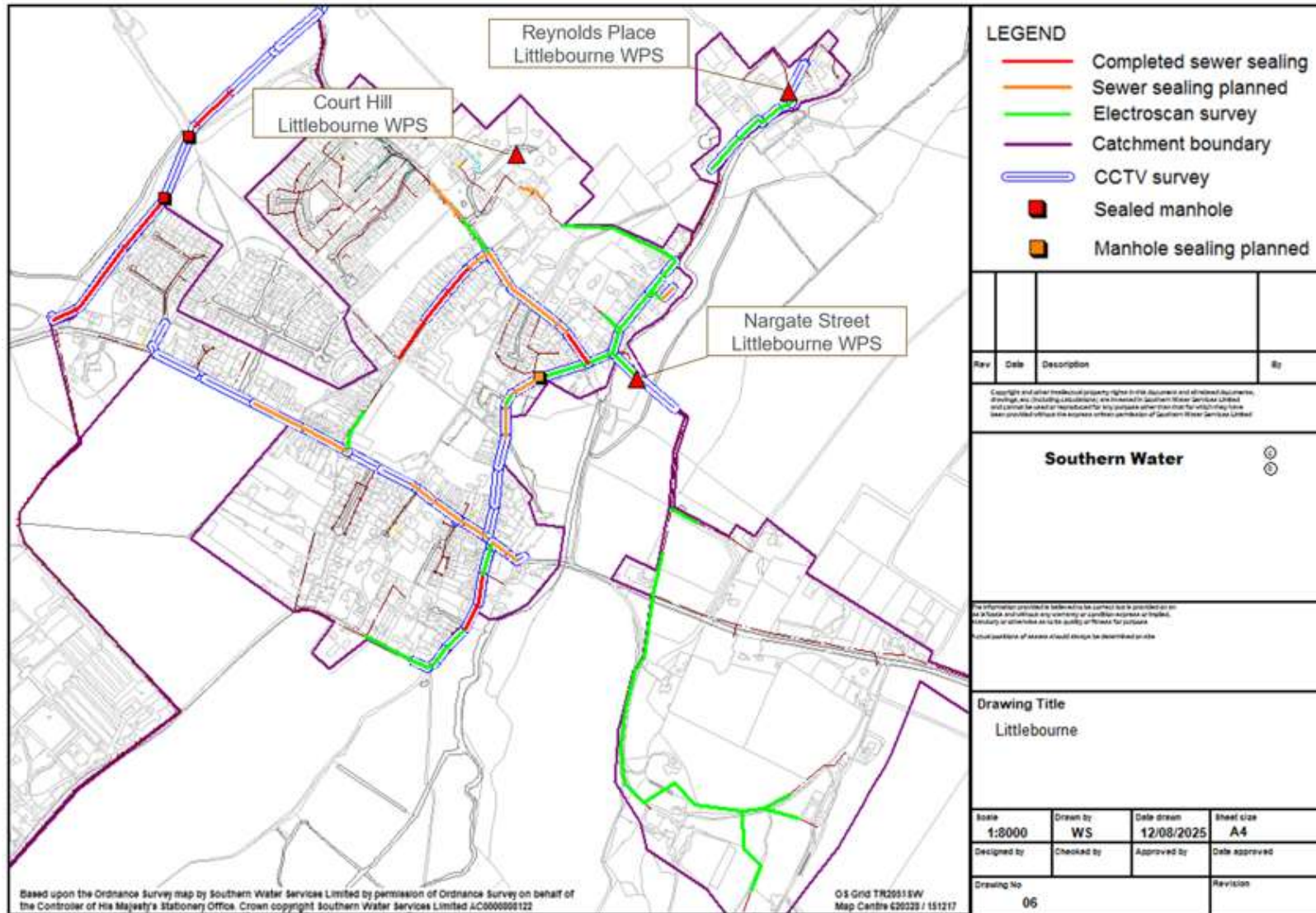
Detailed plan 5



Note – sewers shown as surveyed by CCTV or electroscan with no corresponding sealing work have been determined to not require rehabilitation.



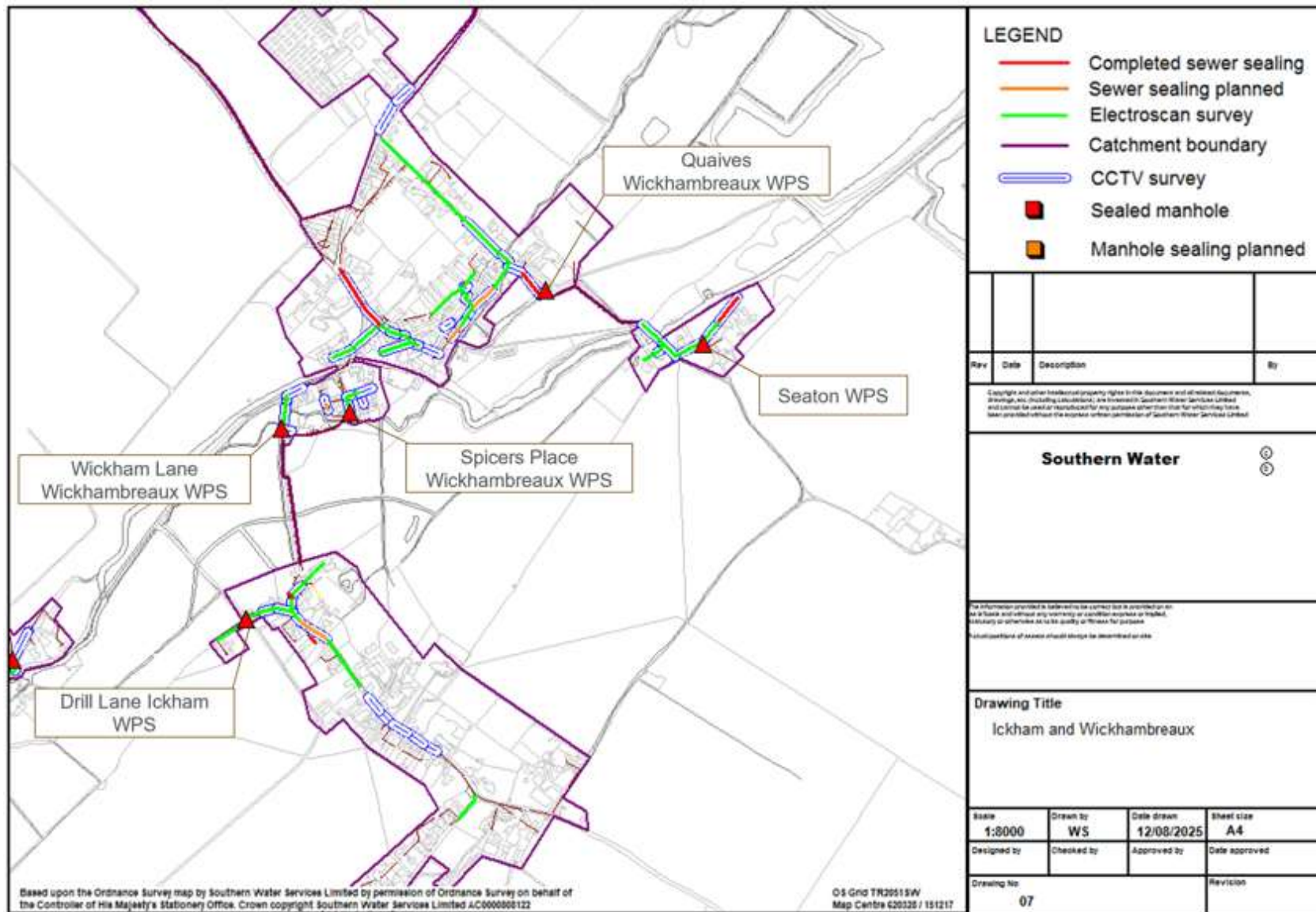
Detailed plan 6



Note – sewers shown as surveyed by CCTV or electroscan with no corresponding sealing work have been determined to not require rehabilitation.



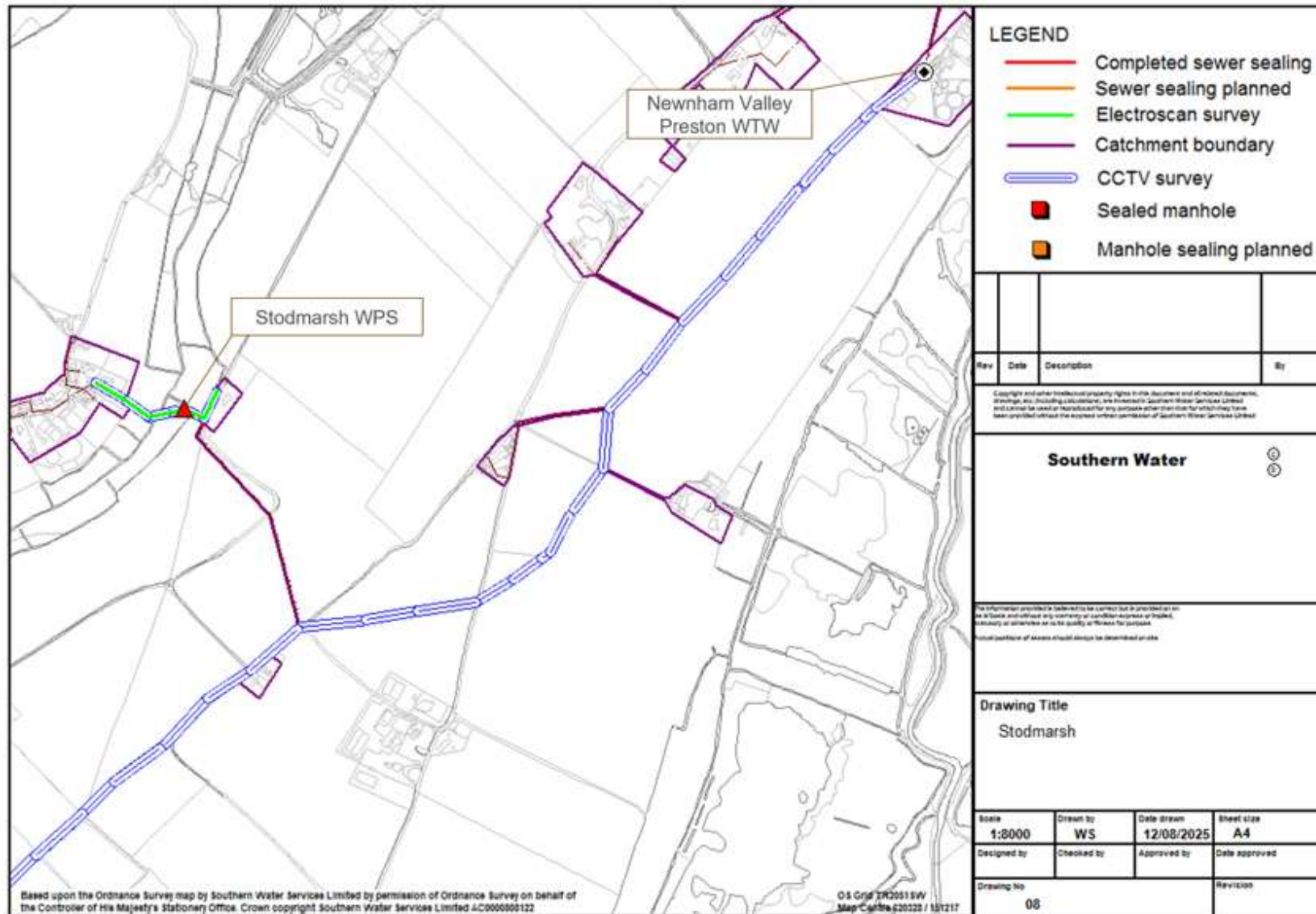
Detailed plan 7



Note – sewers shown as surveyed by CCTV or electroscan with no corresponding sealing work have been determined to not require rehabilitation.



Detailed plan 8



Note – sewers shown as surveyed by CCTV or electroscan with no corresponding sealing work have been determined to not require rehabilitation.

